

Junction box

Q-Mini-L

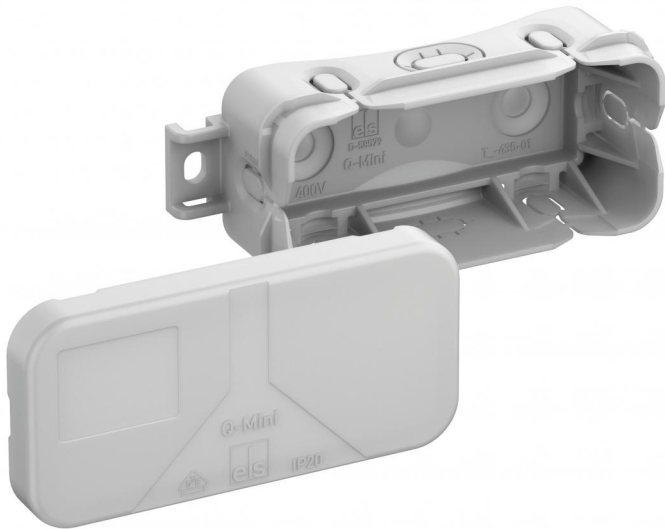
Q-Mini-L

Junction box

Productnumber: 33490801
 Dimensions: 89 x 43 x 34 mm

Junction box in accordance to DIN EN 60670 (VDE 0606), 8 insertions, with strain relief in accordance to DIN VDE 0606 for 3 x 2.5mm², NYM 5 x 1.5mm², of which 6 pieces accessible from above, 2 floor insertions, with external mounting lugs

grey, without terminal, for VDE approved single terminals



Technical Data

electrical characteristics

Protection type UL:	not specified
Rated insulation voltage AC:	400 V
Terminal type:	none
Type of protection:	IP20
Circuit integrity class:	none
Max. conductor cross section:	2,5 mm ²
Protection class:	II

Colours

Base unit colour:	grey
Cover colour:	grey

Dimensions

Length:	43 mm
Width:	89 mm
Height:	34 mm
Inner length:	33 mm
Inner width:	79 mm
Inner height:	29 mm

Material characteristics

suitable for exterior use:	no
Burning behaviour in accordance with VDE:	-
Halogen free:	yes
Industry quality:	no

mechanical properties

Sealable:	no
-----------	----

Type of fastening:	Wall/ceiling mounting
--------------------	-----------------------

Impact strength:	IK07
------------------	------

Ambient conditions

max. relative humidity 25°C:	95 %
------------------------------	------

max. relative humidity 40°C:	50 %
------------------------------	------

Min. ambient temperature:	-25
---------------------------	-----

Max. ambient temperature:	40
---------------------------	----

24h ambient temperature:	35
--------------------------	----

Material

Base unit material:	Polypropylene
---------------------	---------------

Cover material:	Polypropylene
-----------------	---------------

Certificates

Test mark:	VDE
------------	-----
