

The new **Abox | Abox Pro**
Get it done. **Easy.**



The new Abox. A perfect generation change.

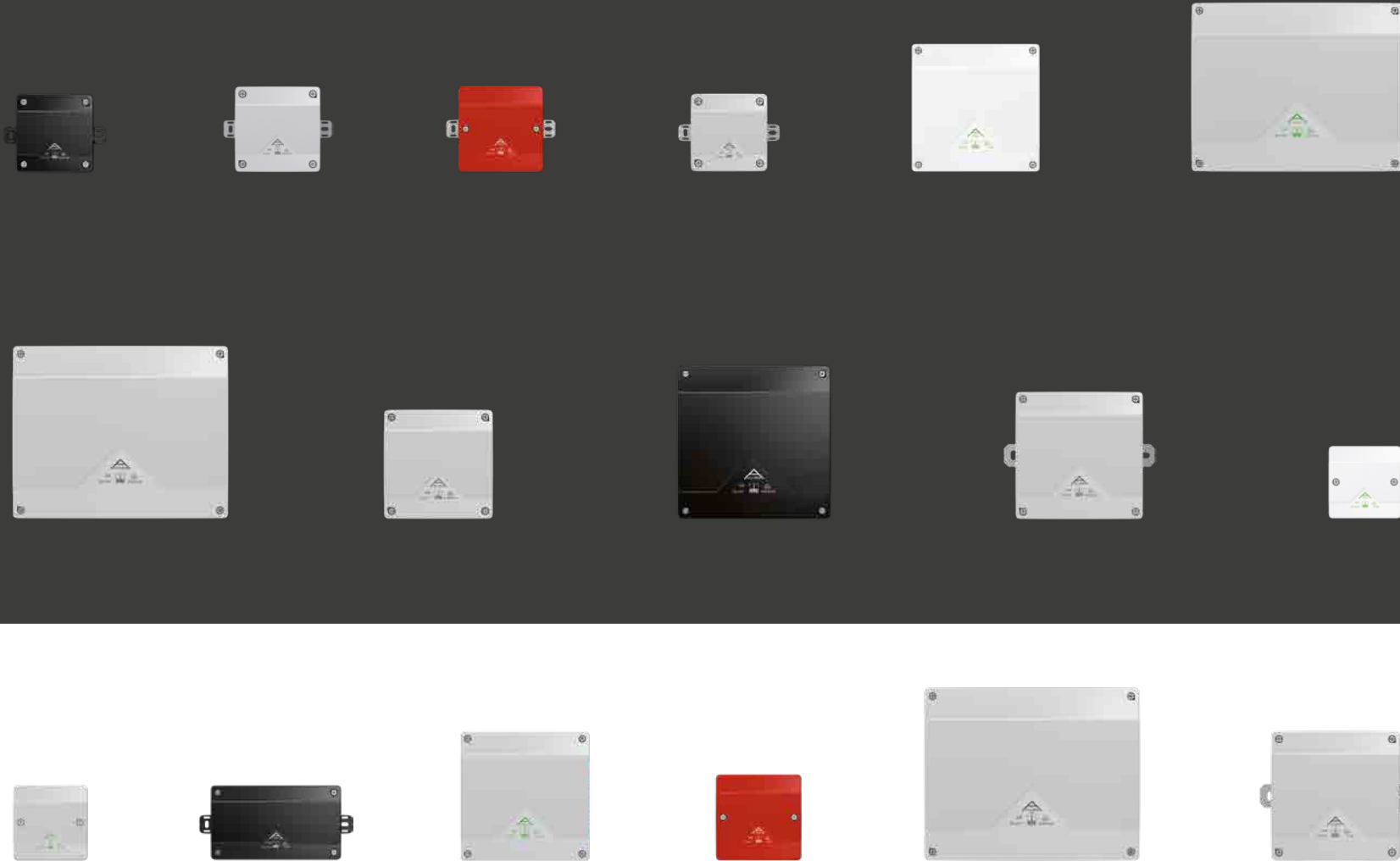
In a constantly changing world, electrical installation companies are facing continuously increasing demands in their business. In this progressive industry, years of experience of older generations meet innovative ideas of young talents - an unbeatable combination.

We capitalise on this, paving the way for pioneering technologies and advancement. Our new **Abox | Abox Pro** junction boxes combine the best of both worlds setting new standards in terms of efficiency and performance. We understand the dynamics of the electrical industry and know that flexibility and reliability are the crucial factors.

To simplify your day-to-day work we developed our new **Abox**, which not only meets current standards, but also the challenges of the future. With us, don't think about it - just get it done - easy.

Abox | Abox Pro

The next generation of junction boxes.





Abox Indoor and protected outdoor areas

Quick and easy to install.

IP66

35²

IK07



1000V
AC

1000V
DC



The new **Abox Standard** redefines safety, flexibility and speed in the installation of junction boxes. Suitable for even more indoor and protected outdoor applications, installation of the **Abox** is easier and quicker than ever before. This is ensured by numerous clever details such as the self-sealing soft insertion membranes or the enclosed Wago terminals. The new generation even comes in a new size for even more application flexibility. The new **Abox Standard** makes the installation of junction boxes quicker and easier than ever before, without compromising on safety.

Abox Pro Industrial and unprotected outdoor areas Made for demanding requirements.



Maximum protection under challenging conditions is what we developed the new **Abox Pro** for. Thanks to high-quality components and a robust construction, the new junction boxes guarantee high impact resistance and protect against water, heat and sunlight. The patented multiple knock-out membranes are simple and clean to use, while the choice of entries and cable diameters remains flexible. The option to fix mounting rails, circuit boards or mounting plates makes the **Abox Pro** versatile usable. The result is that we are setting new standards in terms of reliability and adaptability.





Abox | Abox Pro Get it done. **Easy.**

We developed the new **Abox | Abox Pro** especially for professional doers - based on years of experience and our partnership-based collaboration with the electric craft. Numerous clever details of the new **Abox-generation** make your everyday work easier and the installation of junction boxes more efficient than ever before.

Valuable time is left for other practical tasks. You can just focus on the essentials and „get it done - easy“. The new **Abox | Abox Pro** stands for productivity and efficiency - exactly what a doer needs on the construction site.

The advantages.

Simply unbeatable.



Unparalleled speed of installation

Quick and easy to install.



Cable gland

Self locking of the locknuts at the largest diameter.



Soft insertion membranes „soft membranes“

Rapid insertion of the cables.



3 entries on each side

Flexible branching and extending from the smallest size of 2.5².



Easy alignment of the box by centre marking

Rapid alignment of the junction boxes, e.g. by laser.



Pozidriv/slot head screws (PZ/S)

Stainless steel cover and terminal screws - simply tighten all screws with only one screwdriver.



Wago plug-in terminals included

Counts for Abox with 2.5² and 4² terminals.



High-set screw terminals from 6²

Fast and clear cabling, preassembled for rapid installation.



VDE-approved

Connection terminals for rigid and flexible conductors with wire end ferrules.



Screw captives

For safe screw retention. This makes overhead mounting easier.



Sturdy external fixing lugs

Easier work thanks to uncomplicated fastening with standard M6 screws on cable trays.



For every location

Whether indoors or outdoors, in industry, agriculture or shipping.



For floodplains

Abox Pro XT with cast resin in IP68.



Variety

The extensive junction box series has been further expanded with the new Abox 025/2 size.



Optimised sealing areas

The right cable for every cable insertion.



Flat cover

The flat cover is ideal for individual labelling and for the installation of components.



Certifications

VDE, DLG, DNV



Broad range of accessories

e.g. with further options for fastening.



We make it easy.
The fastest assembly ever.



Centre markings

Perfect alignment in record time.

Using the centre markings on the box, the **Abox** can be optimally aligned in seconds, by laser for example.



Internal mounting

Quickly and easily onto the wall.

Wall mounting is straightforward thanks to the internal fixing points. The screws stay at place by the membranes.



One for all / Pozidriv/slotted head (PZ/S)

No more laborious tool changes.

Only one screwdriver is needed for use with all the screws on the terminal and cover of the new **Abox series**.



Larger interior space

Wiring made easy.

Maximum wiring freedom and ease of working thanks to the larger internal space of the new **Abox series**.

Fast and simple.

Thanks to the innovative technology, installation of **Abox** junction boxes is faster than ever before. The new generation enables efficient and time-saving installation, improves the electrical installation process and maximises the work performance of electrical professionals.





Simple branching and extension thanks to „soft membrane“

Ultra-fast up to IP66

Quickly done.

The soft insertion membranes (soft-membranes) made of TPE enable quick and easy cable insertion for the **Abox 025 - Abox 100 types**.



Soft insertion membranes

Sealed tight in seconds with IP 66.

The **Abox** „soft membrane“ models allow ultra-fast cable insertion.

3 entries

For even easier branching and extending.

The standard version of the new **Abox** is now equipped with at least three soft insertion membranes on one side.

Easy to remove

No additional tools required.

The soft membranes can easily be removed with a screwdriver or pressed in without any tools.

Optional cable glands

No additional tools required.

The entries can then be replaced by cable glands if required.





Plug-in or screw terminals

We can supply the right terminal
for every application.



WAGO terminal

The classic solution for small cross-sections. The enclosed Wago plug-in terminals ensure a safe and fast connection.

Raised screw terminal

Sturdy and clear installation. Our raised screw terminals are the ideal solution for larger cross-sections.



Simple and safe. The new **Abox SL** and **SLK** models simplify wiring with Wago spring terminals and thus enable vibration- and shock-proof, maintenance-free connections. Maintenance and troubleshooting are facilitated by easily accessible test openings on the terminals. The **Abox SLK** also has fixed-position terminal holder for more comfort during wiring and maintenance.



Innovative cover retainer

Remains in place even when mounted overhead.
Once the cover has been positioned on the box, it remains in place and can easily be screwed on.



Mast mounting

For simple attachment.
Mast clamp fastening sets enable quick mounting on pipes, masts and constructions.



New size for more wiring space

Perfect double.
The new **Abox 025/2** size offers separate clamping areas for data and power cables thanks to its additional installation space.



Robust cover screws made of stainless steel

Designed for durability.
The stainless steel screws are able to cope with all adversities. Revisions are also possible, even after many years of use.

Details make the difference

Clever details simply make
your everyday work better.



External fixing lugs

For safe mounting - everywhere.

With the optimised and remarkably sturdy
external fixing lugs, the **Abox** can be
mounted directly on a cable tray.



Abox Pro.
Made for extreme conditions.
High-performance enclosures to protect any installation.



Extremely robust

Temperatures from -35°C to +80 °C.

Heat, cold, humidity or direct sunlight - the new **Abox Pro** can withstand the most adverse outdoor conditions without any problems.

Industry

For industry and extreme conditions.

With an impact resistance of IK09, high chemical resistance and temperature resistance of up to 80°C, the **Abox Pro** offers durable protection in extreme applications.

Underground + floodplains

For higher sealing areas.

The **Abox Pro XT** is designed for installation underground or in floodplains. The cast resin technology allows long-term immersion and even subsequent testing.

Agriculture + farming

Safety for people and animals.

Electrical installations in agriculture require reliable protection. Influences such as dust, moisture and ammonia make it necessary to use materials with DLG certification.

The definition of professionalism.

With the new **Abox-Pro** series you are ready for any application. The **Abox Pro** is impressive in a number of respects: It is extremely impact- and heat-resistant, waterproof, multi-certified, resistant to chemicals, approved for shipping and agriculture and, above all, easy to install.



**The most comprehensive
range ever.**

Practical applications are in our focus.



Variety of sizes

8 different sizes.

The **Abox** junction box programme comprises a wide range of sizes for diverse areas of application and individual requirements.

The twin Abox 025

Expanded installation space.

The brand new **Abox 025/2** size allows applications such as space-saving escape route monitoring with separated clamping areas.

Adapted to the installation environment

Available in various colours.

We have the right colours in stock for multiple environments: black, white, grey and with a red cover for identification of the safety lighting.

Simple labelling

Labelling on a flat cover.

Whether labelling with a pen or individual stickers - the newly-designed Abox cover offers the ideal surface.





Terminal holder + partition wall

Clear wiring.

The terminal holder allows easy fixation of Wago-installation terminals. The partition wall creates separate areas.



Mast clamp

For simple and flexible mounting.

Safe attachment to masts, pipes or constructions.



Cable entries

Everything tight.

Following straightforward knocking-out, simply fix the double membrane seal or the cable gland.



Cast-resin bag

Abox Pro XT, Abox Pro XT SL, Abox Pro XT SLK.

For safe sealing of the boxes for installation underground and in floodplains.



The essentials are always on board.

Our junction boxes are always supplied with the accessories required for installation. Additional accessories can be ordered separately for special applications or replacements. This guarantees perfect solutions for an efficient and safe installation.

Are you in need of more accessories?

The Abox offers a wide selection.



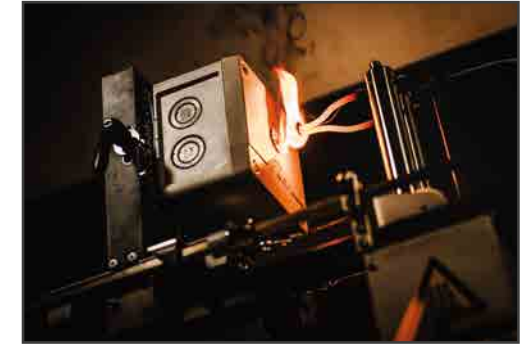
Safety under all conditions.

We test and certify to the highest standards.



No compromises in safety.

For us it's mandatory: the entire **Abox series** is subject to extensive testing and certifications. It is VDE and DLG certified. The DNV certifications means that the **Abox Pro** version is approved for use in shipping and maritime applications.



Impact testing in our own laboratory.

IK testing.

The impact tests determine the protection against mechanical stress (IK code).

Water and contact protection testing

IPx6 / IPx7 / IPx8 / IPx9.

In electrotechnical applications, the wiring in the enclosure must work safely under environmental conditions for many years.

Dust tests

The IP6x - it doesn't get any better.

The dust stays outside - even in extreme environmental conditions.

Glow wire resistance, climatic chamber

And many more tests.

For us, the highest standards of product safety are mandatory. Made and tested in Germany.

Junction Boxes Abox

Abox 025

87 x 87 x 52 mm



Junction box, protection class IP66, nominal cross-section 2.5 mm², certified by VDE (DIN EN 60670-1/-22 (VDE 0606-1/-22)), DLG (Ammonia resistance), self-sealing, soft insertion membranes, M16/M20, sealing range 4 - 16 mm, (1 rear, 8 side), internal fixing points, for standard indoor and protected outdoor installations

Description	Order no.	PU
Abox 025-L NEW grey, U _i =1000 V AC, without terminals	■ 80240001	1/60
Abox 025-L/w NEW white, U _i =1000 V AC, without terminals	□ 80210001	1/60
Abox 025-L/sw NEW black, U _i =1000 V AC, without terminals	■ 80200001	1/60
Abox 025-L/SB NEW grey, U _i =1000 V AC, with red cover, without terminals, for identification of safety lighting circuits	■ 80270001	1/60
Abox 025-2,5² NEW grey, U _i =450 V AC, I _n =24 A, with 5 screwless 5-wire terminal, Wago 2273-205, max. nominal cross-section in accordance with DIN EN 60998: 2.5 mm ² , clampable cross-sections per connection pole: 5 x 0.5 - 2.5 mm ² rigid Cu/Al (follow installation instructions)	■ 80242001	1/60
Abox 025-2,5²/w NEW white, U _i =450 V AC, I _n =24 A, with 5 screwless 5-wire terminal, Wago 2273-205, max. nominal cross-section in accordance with DIN EN 60998: 2.5 mm ² , clampable cross-sections per pole: 5 x 0.5 - 2.5 mm ² rigid Cu/Al (follow installation instructions)	□ 80212001	1/60

Abox 025 AB

87 x 87 x 52 mm



Junction box, protection class IP66, nominal cross-section 2.5 mm², certified by VDE (DIN EN 60670-1/-22 (VDE 0606-1/-22)), DLG (Ammonia resistance), self-sealing, soft insertion membranes, M16/M20, sealing range 4 - 16 mm, (1 rear, 8 side), external fixing lugs, for standard indoor and protected outdoor installations

Description	Order no.	PU
Abox 025 AB-L NEW grey, U _i =1000 V AC, without terminals	■ 80240101	1/60
Abox 025 AB-L/sw NEW black, U _i =1000 V AC, without terminals	■ 80200101	1/60
Abox 025 AB-L/SB NEW grey, U _i =1000 V AC, with red cover, without terminals, for identification of safety lighting circuits	■ 80270101	1/60
Abox 025 AB-Pot NEW grey, U _i =690 V AC, with 1 x PE terminal block 4 ² on standard rail 15mm	■ 80442701	1/60
Abox 025 AB-2,5² NEW grey, U _i =450 V AC, I _n =24 A, with 5 screwless 5-wire terminal, Wago 2273-205, max. nominal cross-section in accordance with DIN EN 60998: 2.5 mm ² , clampable cross-sections per pole: 5 x 0.5 - 2.5 mm ² rigid Cu/Al (follow installation instructions)	■ 80242101	1/60

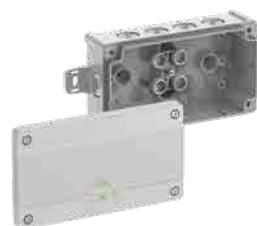
Junction Boxes Abox

Abox 025/2 152 x 87 x 52 mm



Junction box, protection class IP66, nominal cross-section 2.5 mm², certified by VDE (DIN EN 60670-1/-22 (VDE 0606-1/-22)), DLG (Ammonia resistance), self-sealing, soft insertion membranes, M20, sealing range 4 - 16 mm, (2 rear, 10 side), internal fixing points, for standard indoor and protected outdoor installations

Abox 025/2 AB 152 x 87 x 52 mm



Junction box, protection class IP66, nominal cross-section 2.5 mm², certified by VDE (DIN EN 60670-1/-22 (VDE 0606-1/-22)), DLG (Ammonia resistance), self-sealing, soft insertion membranes, M20, sealing range 4 - 16 mm, (2 rear, 10 side), external fixing lugs, for standard indoor and protected outdoor installations

Description	Order no.	PU
Abox 025/2-L NEW grey, U _i =1000 V AC, without terminals	■ 80240201	1/36
Abox 025/2-L/w NEW white, U _i =1000 V AC, without terminals	□ 80210201	1/36
Abox 025/2-L/sw NEW black, U _i =1000 V AC, without terminals	■ 80200201	1/36
Abox 025/2-L/SB NEW grey, U _i =1000 V AC, with red cover, without terminals, for identification of safety lighting circuits	■ 80270201	1/36

Description	Order no.	PU
Abox 025/2 AB-L NEW grey, U _i =1000 V AC, without terminals	■ 80240301	1/36
Abox 025/2 AB-L/sw NEW black, U _i =1000 V AC, without terminals	■ 80200301	1/36
Abox 025/2 AB-L/SB NEW grey, U _i =1000 V AC, with red cover, without terminals, for identification of safety lighting circuits	■ 80270301	1/36



Junction Boxes Abox

Abox 040

102 x 102 x 57 mm



Junction box, protection class IP66, nominal cross-section 4 mm², certified by VDE (DIN EN 60670-1/-22 (VDE 0606-1/-22)), DLG (Ammonia resistance), self-sealing, soft insertion membranes, M20/M25, sealing range 4 - 21 mm, (1 rear, 10 side), internal fixing points, for standard indoor and protected outdoor installations

Description	Order no.	PU
Abox 040-L NEW grey, U _i =1000 V AC, without terminals	■ 80440001	1/60
Abox 040-L/w NEW white, U _i =1000 V AC, without terminals	□ 80410001	1/60
Abox 040-L/sw NEW black, U _i =1000 V AC, without terminals	■ 80400001	1/60
Abox 040-L/SB NEW grey, U _i =1000 V AC, with red cover, without terminals, for identification of safety lighting circuits	■ 80470001	1/60
Abox 040-2,5² NEW grey, U _i =450 V AC, I _n =24 A, with 5 screwless 5-wire terminal, Wago 2273-205, max. nominal cross-section in accordance with DIN EN 60998: 2.5 mm ² , clampable cross-sections per pole: 5 x 0.5 - 2.5 mm ² rigid Cu/Al (follow installation instructions)	■ 80243001	1/60
Abox 040-4² NEW grey, U _i =400 V AC, I _n =32 A, with 5 screwless 4-wire terminals, Wago 773-604, max. nominal cross-section in accordance with DIN EN 60998: 4 mm ² , clampable cross-sections per pole: 4 x 1.5 - 4.0 mm ² rigid Cu/Al (follow installation instructions)	■ 80442001	1/60
Abox 040-4²/w NEW white, U _i =400 V AC, I _n =32 A, with 5 screwless 4-wire terminals, Wago 773-604, max. nominal cross-section in accordance with DIN EN 60998: 4 mm ² , clampable cross-sections per pole: 4 x 1.5 - 4.0 mm ² rigid Cu/Al (follow installation instructions)	□ 80412001	1/60

Abox 040 AB

102 x 102 x 57 mm



Junction box, protection class IP66, nominal cross-section 4 mm², certified by VDE (DIN EN 60670-1/-22 (VDE 0606-1/-22)), DLG (Ammonia resistance), self-sealing, soft insertion membranes, M20/M25, sealing range 4 - 21 mm, (1 rear, 10 side), external fixing lugs, for standard indoor and protected outdoor installations

Description	Order no.	PU
Abox 040 AB-L NEW grey, U _i =1000 V AC, without terminals	■ 80440101	1/60
Abox 040 AB-L/sw NEW black, U _i =1000 V AC, without terminals	■ 80400101	1/60
Abox 040 AB-L/SB NEW grey, U _i =1000 V AC, with red cover, without terminals, for identification of safety lighting circuits	■ 80470101	1/60
Abox 040 AB-4² NEW grey, U _i =400 V AC, I _n =32 A, with 5 screwless 4-wire terminals, Wago 773-604, max. nominal cross-section in accordance with DIN EN 60998: 4 mm ² , clampable cross-sections per pole: 4 x 1.5 - 4.0 mm ² rigid Cu/Al (follow installation instructions)	■ 80442101	1/60

Junction Boxes Abox

Abox 060

127 x 127 x 70 mm



Junction box, protection class IP66, nominal cross-section 6 mm², certified by VDE (DIN EN 60670-1/-22 (VDE 0606-1/-22)), DLG (Ammonia resistance), self-sealing, soft insertion membranes, M20/M25/M32, sealing range 4 - 28 mm, (2 rear, 8 side), internal fixing points, for standard indoor and protected outdoor installations

Abox 060 AB

127 x 127 x 70 mm



Junction box, protection class IP66, nominal cross-section 6 mm², certified by VDE (DIN EN 60670-1/-22 (VDE 0606-1/-22)), DLG (Ammonia resistance), self-sealing, soft insertion membranes, M20/M25/M32, sealing range 4 - 28 mm, (2 rear, 8 side), external fixing lugs, for standard indoor and protected outdoor installations

Description	Order no.	PU
Abox 060-L NEW grey, U _i =1000 V AC, without terminals	■ 80640001	1/20
Abox 060-L/w NEW white, U _i =1000 V AC, without terminals	□ 80610001	1/20
Abox 060-L/sw NEW black, U _i =1000 V AC, without terminals	■ 80600001	1/20
Abox 060-L/SB NEW grey, U _i =1000 V AC, with red cover, without terminals, for identification of safety lighting circuits	■ 80670001	1/20
Abox 060-6² NEW grey, U _i =690 V AC, I _n =41 A, with raised screw terminal block, 5-pole - 6 mm ² , clampable cross-sections per pole: 4 x 1.5 mm ² , 4 x 2.5 mm ² , 4 x 4 mm ² , 4 x 6 mm ² rigid Cu/flexible with wire-end ferrule	■ 80642001	1/20
Abox 060-6²/w NEW white, U _i =690 V AC, I _n =41 A, with raised screw terminal block, 5-pole - 6 mm ² , clampable cross-sections per pole: 4 x 1.5 mm ² , 4 x 2.5 mm ² , 4 x 4 mm ² , 4 x 6 mm ² rigid Cu/flexible with wire-end ferrule	□ 80612001	1/20
Abox 060-6²/sw NEW black, U _i =690 V AC, I _n =41 A, with raised screw terminal block, 5-pole - 6 mm ² , clampable cross-sections per pole: 4 x 1.5 mm ² , 4 x 2.5 mm ² , 4 x 4 mm ² , 4 x 6 mm ² rigid Cu/flexible with wire-end ferrule	■ 80602001	1/20

Description	Order no.	PU
Abox 060 AB-L NEW grey, U _i =1000 V AC, without terminals	■ 80640101	1/20
Abox 060 AB-6² NEW grey, U _i =690 V AC, I _n =41 A, with raised screw terminal block, 5-pole - 6 mm ² , clampable cross-sections per pole: 4 x 1.5 mm ² , 4 x 2.5 mm ² , 4 x 4 mm ² , 4 x 6 mm ² rigid Cu/flexible with wire-end ferrule	■ 80642101	1/20
Abox 060 AB-L/SB NEW grey, U _i =1000 V AC, with red cover, without terminals, for identification of safety lighting circuits	■ 80670101	1/20

Junction Boxes Abox

Abox 100 152 x 152 x 80 mm



Junction box, protection class IP66, nominal cross-section 10 mm², certified by VDE (DIN EN 60670-1/-22 (VDE 0606-1/-22)), DLG (Ammonia resistance), self-sealing, soft insertion membranes, M20/M25/M32, sealing range 8 - 28 mm, (2 rear, 10 side), internal fixing points, for standard indoor and protected outdoor installations

Description	Order no.	PU
Abox 100-L NEW grey, U _i =1000 V AC, without terminals	■ 81040001	1/20
Abox 100-L/w NEW white, U _i =1000 V AC, without terminals	□ 81010001	1/20
Abox 100-10² NEW grey, U _i =690 V AC, I _n =57 A, with raised screw terminal block, 5-pole-10 mm ² , clampable cross-sections per pole: 4 x 2.5 mm ² , 4 x 4 mm ² , 4 x 6 mm ² , 4 x 10 mm ² rigid Cu/flexible with wire-end ferrule	■ 81042001	1/20
Abox 100-10²/w NEW white, U _i =690 V AC, I _n =57 A, with raised screw terminal block, 5-pole-10 mm ² , clampable cross-sections per pole: 4 x 2.5 mm ² , 4 x 4 mm ² , 4 x 6 mm ² , 4 x 10 mm ² rigid Cu/flexible with wire-end ferrule	□ 81012001	1/20

Abox 100 AB 152 x 152 x 80 mm



Junction box, protection class IP66, nominal cross-section 10 mm², certified by VDE (DIN EN 60670-1/-22 (VDE 0606-1/-22)), DLG (Ammonia resistance), self-sealing, soft insertion membranes, M20/M25/M32, sealing range 8 - 28 mm, (2 rear, 10 side), external fixing lugs, for standard indoor and protected outdoor installations

Description	Order no.	PU
Abox 100 AB-L NEW grey, U _i =1000 V AC, without terminals	■ 81040101	1/20
Abox 100 AB-10² NEW grey, U _i =690 V AC, I _n =57 A, with raised screw terminal block, 5-pole-10 mm ² , clampable cross-sections per pole: 4 x 2.5 mm ² , 4 x 4 mm ² , 4 x 6 mm ² , 4 x 10 mm ² rigid Cu/flexible with wire-end ferrule	■ 81042101	1/20

Abox 160 182 x 182 x 90 mm



Junction box, protection class IP55/IP66, nominal cross-section 16 mm², certified by VDE (DIN EN 60670-1/-22 (VDE 0606-1/-22)), DLG (Ammonia resistance), knockouts, M20/M32/M40, (2 rear, 10 side), internal fixing points, for standard indoor and protected outdoor installations

Accessories supplied:

4 attachment bushes IP55 M40 sealing range 17 - 30 mm,
1 sealing plug IP55 M40, cover retainer

Description	Order no.	PU
Abox 160-L NEW grey, U _i =1000 V AC, without terminals	■ 81640001	1/10
Abox 160-16² NEW grey, U _i =690 V AC, I _n =76 A, with raised screw terminal block, 5-pole-16 mm ² , clampable cross-sections per pole: 12 x 4 mm ² , 8 x 6 mm ² , 4 x 10 mm ² , 4 x 16 mm ² rigid Cu/flexible with wire-end ferrule	■ 81642001	1/10

Junction Boxes Abox

Abox 250 252 x 202 x 120 mm



Junction box, protection class IP55/IP66, nominal cross-section 25 mm², certified by VDE (DIN EN 60670-1/-22 (VDE 0606-1/-22)), DLG (Ammonia resistance), knockouts, M20/M25/M40/M50, (4 rear, 10 side), internal fixing points, for standard indoor and protected outdoor installations

Accessories supplied:

4 attachment bushes IP55 M40 sealing range 17 - 30 mm,
1 sealing plug IP55 M40, cover retainer

Description	Order no.	PU
Abox 250-L NEW grey, U _i =1000 V AC, without terminals	■ 82540001	1/4
Abox 250-25² NEW grey, U _i =690 V AC, I _n =101 A, with raised screw terminal block, 5-pole - 25 mm ² , clampable cross-sections per pole: 12 x 10 mm ² , 8 x 16 mm ² , 4 x 25 mm ² Cu rigid/flexible with wire-end ferrule	■ 82542001	1/4

Abox 350 252 x 252 x 120 mm



Junction box, protection class IP55/IP66, nominal cross-section 35 mm², certified by VDE (DIN EN 60670-1/-22 (VDE 0606-1/-22)), DLG (Ammonia resistance), knockouts, M20/M25/M40/M50, (4 rear, 12 side), internal fixing points, for standard indoor and protected outdoor installations

Accessories supplied:

4 attachment bushes IP55 M40 sealing range 17 - 30 mm,
1 sealing plug IP55 M40, cover retainer

Description	Order no.	PU
Abox 350-L NEW grey, U _i =1000 V AC, without terminals	■ 83540001	1/3
Abox 350-35² NEW grey, U _i =690 V AC, I _n =125 A, with raised screw terminal block, 5-pole - 35 mm ² , clampable cross-sections per pole: 12 x 10 mm ² , 8 x 16 mm ² , 4 x 25 mm ² , 4 x 35 mm ² rigid Cu/flexible with wire-end ferrule	■ 83542001	1/3



Junction Boxes Abox

Abox HA 250 252 x 202 x 120 mm



Junction box, protection class IP54/IP66, nominal cross-section 25 mm², certified by DLG (Ammonia resistance), knockouts, M20/M25/M40/M50, (4 rear, 10 side), internal fixing points, for standard indoor and protected outdoor installations

Accessories supplied:

4 attachment bushes IP55 M40 sealing range 17 - 30 mm,
3 twist plugs IP54 M50 sealing range 22 - 35 mm, cover retainer

Description	Order no.	PU
Abox HA 250 NEW grey, U _i =690 V AC, with standard rail-mounted main line junction terminals, 4-pole, clampable cross-sections per main line pole: 1.5 - 25 mm ² rigid (Cu/Al) and multi-wire (Cu), 1.5 -16 mm ² fine-wire with wire end ferrule (Cu). Clampable cross-sections per branch line pole 1.5 - 16 mm ² rigid (Cu/Al) and multi-wire (Cu), 1.5 -10 mm ² fine-wire with wire end ferrule (Cu). Rated current in accordance with EN 60947-7: 130 A (Cu) and 100 A (Al)	■ 48142501	1/4

Abox HA 350 252 x 252 x 120 mm



Junction box, protection class IP54/IP66, nominal cross-section 35 mm², certified by DLG (Ammonia resistance), knockouts, M20/M25/M40/M50, (4 rear, 12 side), internal fixing points, for standard indoor and protected outdoor installations

Accessories supplied:

4 attachment bushes IP55 M40 sealing range 17 - 30 mm,
3 twist plugs IP54 M50 sealing range 22 - 35 mm, cover retainer

Description	Order no.	PU
Abox HA 350 NEW grey, U _i =690 V AC, with standard rail-mounted main line junction terminals, 4-pole, clampable cross-sections per main line pole: 10 - 35 mm ² rigid (Cu/Al) and multi-wire (Cu), 10 -25 mm ² fine-wire with wire end ferrule (Cu). Clampable cross-sections per branch line pole 1.5 - 25 mm ² rigid (Cu/Al) and multi-wire (Cu), 1.5 -16 mm ² fine-wire with wire end ferrule (Cu). Rated current in accordance with EN 60947-7: 160 A (Cu) and 130 A (Al)	■ 48143501	1/3



Abox Pro 025

92 x 92 x 60 mm



Junction box, protection class IP66/IP67/IP69, nominal cross-section 2.5 mm², certified by VDE (DIN EN 60670-1/-22 (VDE 0606-1/-22)), DLG (Ammonia resistance), DNV (Class: Ships and Offshore Installations), knockouts, M16/M20, (1 rear, 7 side), internal fixing points, for installations in industrial environments and unprotected outdoor areas

Accessories supplied:

4 double membrane seals IP66 M20 sealing range 7 - 13 mm, cover retainer

Description	Order no.	PU
Abox Pro 025-L NEW grey, U _i =1000 V AC, without terminals	■ 40240001	1/60
Abox Pro 025-L/sw NEW black, U _i =1000 V AC, without terminals	■ 40200001	1/60
Abox Pro 025-2,5² NEW grey, U _i =450 V AC, I _n =24 A, with 5 screwless 5-wire terminal, Wago 2273-205, max. nominal cross-section in accordance with DIN EN 60998: 2.5 mm ² , clampable cross-sections per pole: 5 x 0.5 - 2.5 mm ² rigid Cu and Al (follow installation instructions)	■ 40242001	1/60
Abox Pro 025-2,5²/sw NEW black, U _i =450 V AC, I _n =24 A, with 5 screwless 5-wire terminal, Wago 2273-205, max. nominal cross-section in accordance with DIN EN 60998: 2.5 mm ² , clampable cross-sections per pole: 5 x 0.5 - 2.5 mm ² rigid Cu and Al (follow installation instructions)	■ 40202001	1/60

Abox Pro 025 AB

92 x 92 x 60 mm



Junction box, protection class IP66/IP67/IP69, nominal cross-section 2.5 mm², certified by VDE (DIN EN 60670-1/-22 (VDE 0606-1/-22)), DLG (Ammonia resistance), DNV (Class: Ships and Offshore Installations), knockouts, M16/M20, (1 rear, 7 side), external fixing lugs, for installations in industrial environments and unprotected outdoor areas

Accessories supplied:

4 double membrane seals IP66 M20 sealing range 7 - 13 mm, cover retainer

Description	Order no.	PU
Abox Pro 025 AB-L NEW grey, U _i =1000 V AC, without terminals	■ 40240101	1/36
Abox Pro 025 AB-L/sw NEW black, U _i =1000 V AC, without terminals	■ 40200101	1/36
Abox Pro 025 AB-2,5² NEW grey, U _i =450 V AC, I _n =24 A, with 5 screwless 5-wire terminal, Wago 2273-205, max. nominal cross-section in accordance with DIN EN 60998: 2.5 mm ² , clampable cross-sections per pole: 5 x 0.5 - 2.5 mm ² rigid Cu and Al (follow installation instructions)	■ 40242101	1/36

Junction Boxes Abox Pro

Abox Pro 040

102 x 102 x 70 mm



Junction box, protection class IP66/IP67/IP69, nominal cross-section 4 mm², certified by VDE (DIN EN 60670-1/-22 (VDE 0606-1/-22)), DLG (Ammonia resistance), DNV (Class: Ships and Offshore Installations), knockouts, M16/M20/M25, (1 rear, 7 side), internal fixing points, for installations in industrial environments and unprotected outdoor areas

Accessories supplied:

4 double membrane seals IP66 M25 sealing range 9 - 17 mm, cover retainer

Description	Order no.	PU
Abox Pro 040-L NEW grey, U _i =1000 V AC, without terminals	40440001	1/36
Abox Pro 040-L/sw NEW black, U _i =1000 V AC, without terminals	40400001	1/36
Abox Pro 040-2,5² NEW grey, U _i =450 V AC, I _n =24 A, with 5 screwless 5-wire terminal, Wago 2273-205, max. nominal cross-section in accordance with DIN EN 60998: 2.5 mm ² , clampable cross-sections per pole: 5 x 0.5 - 2.5 mm ² rigid Cu and Al (follow installation instructions)	40243001	1/36
Abox Pro 040-4² NEW grey, U _i =400 V AC, I _n =32 A, with 5 screwless 4-wire terminal blocks, Wago 773-604, max. nominal cross-section in accordance with DIN EN 60998: 4 mm ² , clampable cross-sections per pole: 4 x 1.5 - 4.0 mm ² rigid Cu/Al (follow installation instructions)	40442001	1/36
Abox Pro 040-4²/sw NEW black, U _i =400 V AC, I _n =32 A, with 5 screwless 4-wire terminal blocks, Wago 773-604, max. nominal cross-section in accordance with DIN EN 60998: 4 mm ² , clampable cross-sections per pole: 4 x 1.5 - 4.0 mm ² rigid Cu/Al (follow installation instructions)	40402001	1/36

Abox Pro 040 AB

102 x 102 x 70 mm



Junction box, protection class IP66/IP67/IP69, nominal cross-section 4 mm², certified by VDE (DIN EN 60670-1/-22 (VDE 0606-1/-22)), DLG (Ammonia resistance), DNV (Class: Ships and Offshore Installations), knockouts, M16/M20/M25, (1 rear, 7 side), external fixing lugs, for installations in industrial environments and unprotected outdoor areas

Accessories supplied:

4 double membrane seals IP66 M25 sealing range 9 - 17 mm, cover retainer

Description	Order no.	PU
Abox Pro 040 AB-L NEW grey, U _i =1000 V AC, without terminals	40440101	1/36
Abox Pro 040 AB-4² NEW grey, U _i =400 V AC, I _n =32 A, with 5 screwless 4-wire terminal blocks, Wago 773-604, max. nominal cross-section in accordance with DIN EN 60998: 4 mm ² , clampable cross-sections per pole: 4 x 1.5 - 4.0 mm ² rigid Cu/Al (follow installation instructions)	40442101	1/36

Junction Boxes Abox Pro

Abox Pro 060

127 x 127 x 75 mm



Junction box, protection class IP66/IP67/IP69, nominal cross-section 6 mm², certified by VDE (DIN EN 60670-1/-22 (VDE 0606-1/-22)), DLG (Ammonia resistance), DNV (Class: Ships and Offshore Installations), knockouts, M20/M32, (1 rear, 7 side), internal fixing points, for installations in industrial environments and unprotected outdoor areas

Accessories supplied:

4 double membrane seals IP66 M32 sealing range 13 - 21 mm, cover retainer

Description	Order no.	PU
Abox Pro 060-L NEW grey, U _i =1000 V AC, without terminals	■ 40640001	1/20
Abox Pro 060-L/sw NEW black, U _i =1000 V AC, without terminals	■ 40600001	1/20
Abox Pro 060-6² NEW grey, U _i =690 V AC, I _n =41 A, with raised screw terminal block, 5-pole - 6 mm ² , clampable cross-sections per pole: 4 x 1.5 mm ² , 4 x 2.5 mm ² , 4 x 4 mm ² , 4 x 6 mm ² rigid Cu/flexible with wire-end ferrule	■ 40642001	1/20
Abox Pro 060-6²/sw NEW black, U _i =690 V AC, I _n =41 A, with raised screw terminal block, 5-pole - 6 mm ² , clampable cross-sections per pole: 4 x 1.5 mm ² , 4 x 2.5 mm ² , 4 x 4 mm ² , 4 x 6 mm ² rigid Cu/flexible with wire-end ferrule	■ 40602001	1/20

Abox Pro 060 AB

127 x 127 x 75 mm



Junction box, protection class IP66/IP67/IP69, nominal cross-section 6 mm², certified by VDE (DIN EN 60670-1/-22 (VDE 0606-1/-22)), DLG (Ammonia resistance), DNV (Class: Ships and Offshore Installations), knockouts, M20/M32, (1 rear, 7 side), external fixing lugs, for installations in industrial environments and unprotected outdoor areas

Accessories supplied:

4 double membrane seals IP66 M32 sealing range 13 - 21 mm, cover retainer

Description	Order no.	PU
Abox Pro 060 AB-L NEW grey, U _i =1000 V AC, without terminals	■ 40640101	1/12
Abox Pro 060 AB-6² NEW grey, U _i =690 V AC, I _n =41 A, with raised screw terminal block, 5-pole - 6 mm ² , clampable cross-sections per pole: 4 x 1.5 mm ² , 4 x 2.5 mm ² , 4 x 4 mm ² , 4 x 6 mm ² rigid Cu/flexible with wire-end ferrule	■ 40642101	1/12

Junction Boxes Abox Pro

Abox Pro 100

152 x 152 x 85 mm



Junction box, protection class IP66/IP67/IP69, nominal cross-section 10 mm², certified by VDE (DIN EN 60670-1/-22 (VDE 0606-1/-22)), DLG (Ammonia resistance), DNV (Class: Ships and Offshore Installations), knockouts, M20/M25/M32, (2 rear, 10 side), internal fixing points, for installations in industrial environments and unprotected outdoor areas

Accessories supplied:

4 double membrane seals IP66 M32 sealing range 13 - 21 mm, cover retainer

Description	Order no.	PU
Abox Pro 100-L NEW grey, U _i =1000 V AC, without terminals	■ 41040001	1/10
Abox Pro 100-L/sw NEW black, U _i =1000 V AC, without terminals	■ 41000001	1/10
Abox Pro 100-10² NEW grey, U _i =690 V AC, I _n =57 A, with raised screw terminal block, 5-pole- 10 mm ² , clampable cross-sections per pole: 4 x 2.5 mm ² , 4 x 4 mm ² , 4 x 6 mm ² , 4 x 10 mm ² rigid Cu/flexible with wire-end ferrule	■ 41042001	1/10
Abox Pro 100-10²/sw NEW black, U _i =690 V AC, I _n =57 A, with raised screw terminal block, 5-pole- 10 mm ² , clampable cross-sections per pole: 4 x 2.5 mm ² , 4 x 4 mm ² , 4 x 6 mm ² , 4 x 10 mm ² rigid Cu/flexible with wire-end ferrule	■ 41002001	1/10

Abox Pro 100 AB

152 x 152 x 85 mm



Junction box, protection class IP66/IP67/IP69, nominal cross-section 10 mm², certified by VDE (DIN EN 60670-1/-22 (VDE 0606-1/-22)), DLG (Ammonia resistance), DNV (Class: Ships and Offshore Installations), knockouts, M20/M25/M32, (2 rear, 10 side), external fixing lugs, for installations in industrial environments and unprotected outdoor areas

Accessories supplied:

4 double membrane seals IP66 M32 sealing range 13 - 21 mm, cover retainer

Description	Order no.	PU
Abox Pro 100 AB-L NEW grey, U _i =1000 V AC, without terminals	■ 41040101	1/8
Abox Pro 100 AB-10² NEW grey, U _i =690 V AC, I _n =57 A, with raised screw terminal block, 5-pole- 10 mm ² , clampable cross-sections per pole: 4 x 2.5 mm ² , 4 x 4 mm ² , 4 x 6 mm ² , 4 x 10 mm ² rigid Cu/flexible with wire-end ferrule	■ 41042101	1/8



Abox Pro 160

182 x 182 x 90 mm



Junction box, protection class IP66/IP67/IP69, nominal cross-section 16 mm², certified by VDE (DIN EN 60670-1/-22 (VDE 0606-1/-22)), DLG (Ammonia resistance), DNV (Class: Ships and Offshore Installations), knockouts, M20/M32/M40, (2 rear, 10 side), internal fixing points, for installations in industrial environments and unprotected outdoor areas

Accessories supplied:

4 double membrane seals IP66 M40 sealing range 17 - 28 mm, cover retainer

Description	Order no.	PU
Abox Pro 160-L NEW grey, U _i =1000 V AC, without terminals	■ 41640001	1/10
Abox Pro 160-L/sw NEW black, U _i =1000 V AC, without terminals	■ 41600001	1/10
Abox Pro 160-16² NEW grey, U _i =690 V AC, I _n =76 A, with raised screw terminal block, 5-pole- 16 mm ² , clampable cross-sections per pole: 12 x 4 mm ² , 8 x 6 mm ² , 4 x 10 mm ² , 4 x 16 mm ² rigid Cu/flexible with wire-end ferrule	■ 41642001	1/10
Abox Pro 160-16²/sw NEW black, U _i =690 V AC, I _n =76 A, with raised screw terminal block, 5-pole- 16 mm ² , clampable cross-sections per pole: 12 x 4 mm ² , 8 x 6 mm ² , 4 x 10 mm ² , 4 x 16 mm ² rigid Cu/flexible with wire-end ferrule	■ 41602001	1/10

Abox Pro 250

252 x 202 x 120 mm



Junction box, protection class IP66/IP67/IP69, nominal cross-section 25 mm², certified by VDE (DIN EN 60670-1/-22 (VDE 0606-1/-22)), DLG (Ammonia resistance), DNV (Class: Ships and Offshore Installations), knockouts, M20/M25/M40/M50, (4 rear, 10 side), internal fixing points, for installations in industrial environments and unprotected outdoor areas

Accessories supplied:

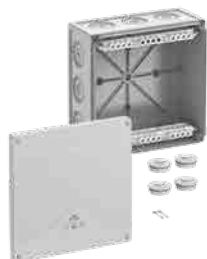
4 double membrane seals IP66 M40 sealing range 17 - 28 mm, cover retainer

Description	Order no.	PU
Abox Pro 250-L NEW grey, U _i =1000 V AC, without terminals	■ 42540001	1/4
Abox Pro 250-L/sw NEW black, U _i =1000 V AC, without terminals	■ 42500001	1/4
Abox Pro 250-25² NEW grey, U _i =690 V AC, I _n =101 A, with raised screw terminal block, 5-pole - 25 mm ² , clampable cross-sections per pole: 12 x 10 mm ² , 8 x 16 mm ² , 4 x 25 mm ² Cu rigid/flexible with wire-end ferrule	■ 42542001	1/4
Abox Pro 250-25²/sw NEW black, U _i =690 V AC, I _n =101 A, with raised screw terminal block, 5-pole - 25 mm ² , clampable cross-sections per pole: 12 x 10 mm ² , 8 x 16 mm ² , 4 x 25 mm ² Cu rigid/flexible with wire-end ferrule	■ 42502001	1/4

Junction Boxes Abox Pro

Abox Pro 350

252 x 252 x 120 mm



Junction box, protection class IP66/IP67/IP69, nominal cross-section 35 mm², certified by VDE (DIN EN 60670-1/-22 (VDE 0606-1/-22)), DLG (Ammonia resistance), DNV (Class: Ships and Offshore Installations), knockouts, M20/M25/M40/M50, (4 rear, 12 side), internal fixing points, for installations in industrial environments and unprotected outdoor areas

Accessories supplied:

4 double membrane seals IP66 M40 sealing range 17 - 28 mm, cover retainer

Description	Order no.	PU
Abox Pro 350-L NEW grey, U _i =1000 V AC, without terminals	■ 43540001	1/3
Abox Pro 350-L/sw NEW black, U _i =1000 V AC, without terminals	■ 43500001	1/3
Abox Pro 350-35² NEW grey, U _i =690 V AC, I _n =125 A, with raised screw terminal block, 5-pole - 35 mm ² , clampable cross-sections per pole: 12 x 10 mm ² , 8 x 16 mm ² , 4 x 25 mm ² . 4 x 35 mm ² rigid/flexible with wire-end ferrule	■ 43542001	1/3
Abox Pro 350-35²/sw NEW black, U _i =690 V AC, I _n =125 A, with raised screw terminal block, 5-pole - 35 mm ² , clampable cross-sections per pole: 12 x 10 mm ² , 8 x 16 mm ² , 4 x 25 mm ² . 4 x 35 mm ² rigid/flexible with wire-end ferrule	■ 43502001	1/3



Junction Boxes Abox SLK

Abox SLK 2,5²

87 x 87 x 52 mm



Junction box, protection class IP66, nominal cross-section 2.5 mm², U_i=450 V AC, certified by VDE (DIN EN 60670-1/-22 (VDE 0606-1/-22)), DLG (Ammonia resistance), self-sealing, soft insertion membranes, M16/M20, sealing range 4 - 16 mm, (1 rear, 8 side), internal fixing points, with screwless terminals for standard indoor and protected outdoor installations

Description

Abox SLK-2,5² **NEW**

grey, I_n=24 A, with 3 floor-fixed, screwless 3-wire terminals, Wago 221-413 - 2.5 mm², clampable cross-sections per pole: 3 x 0.2 to 2.5 mm² rigid Cu and 3 x 0.14 to 2.5 mm² flexible Cu

Order no.

80247001

PU

1/60

Abox SLK 6²

152 x 152 x 80 mm



Junction box, protection class IP66, nominal cross-section 6 mm², U_i=450 V AC, certified by VDE (DIN EN 60670-1/-22 (VDE 0606-1/-22)), DLG (Ammonia resistance), self-sealing, soft insertion membranes, M20/M25/M32, sealing range 8 - 28 mm, (2 rear, 10 side), internal fixing points, with screwless terminals for standard indoor and protected outdoor installations

Description

Abox SLK-6² **NEW**

grey, I_n=41 A, with 5 raised, screwless 3-wire terminals, type Wago 221-613 - 6 mm², clampable cross-sections per pole: 3 x 0.2 to 6 mm² rigid/flexible Cu

Order no.

80647001

PU

1/20

Abox SLK 4²

102 x 102 x 57 mm



Junction box, protection class IP66, nominal cross-section 4 mm², U_i=450 V AC, certified by VDE (DIN EN 60670-1/-22 (VDE 0606-1/-22)), DLG (Ammonia resistance), self-sealing, soft insertion membranes, M20/M25, sealing range 4 - 21 mm, (1 rear, 10 side), internal fixing points, with screwless terminals for standard indoor and protected outdoor installations

Description

Abox SLK-4² **NEW**

grey, I_n=32 A, with 5 floor-fixed, screwless 3-wire terminals, Wago 221-413 - 4 mm², clampable cross-sections per pole: 3 x 0.2 to 4 mm² rigid Cu and 3 x 0.14 to 4 mm² flexible Cu

Order no.

80447001

PU

1/60

Junction Boxes Abox SL

Abox SL 4²

127 x 127 x 70 mm



Junction box, protection class IP66, nominal cross-section 4 mm², U_i=450 V AC, certified by VDE (DIN EN 60670-1/-22 (VDE 0606-1/-22)), DLG (Ammonia resistance), self-sealing, soft insertion membranes, M20/M25/M32, sealing range 4 - 28 mm, (2 rear, 8 side), internal fixing points, with screwless terminals for standard indoor and protected outdoor installations

Description

Abox SL-4² **NEW**

grey, I_n=32 A, with 5 raised, screwless 3-wire terminal blocks, Wago 221-413 - 4 mm², clampable cross-sections per pole: 3 x 0.2 to 4 mm² rigid Cu and 3 x 0.14 to 4 mm² flexible Cu

Order no.

■ 80444001

PU

1/20

Abox SL 6²

152 x 152 x 80 mm



Junction box, protection class IP66, nominal cross-section 6 mm², U_i=690 V AC, certified by VDE (DIN EN 60670-1/-22 (VDE 0606-1/-22)), DLG (Ammonia resistance), self-sealing, soft insertion membranes, M20/M25/M32, sealing range 8 - 28 mm, (2 rear, 10 side), internal fixing points, with screwless terminals for standard indoor and protected outdoor installations

Description

Abox SL-6² **NEW**

grey, I_n=41 A, with raised screwless terminal block Wago 2006-1201, 5-pole, max. nominal cross-section in accordance with DIN EN 60998: 6 mm², clampable cross-sections per pole: 4 x 0.5 to 10 mm² rigid/ flexible Cu

Order no.

■ 80644001

PU

1/20



Abox SL 10²

182 x 182 x 90 mm



Junction box, protection class IP55/IP66, nominal cross-section 10 mm², U_i=690 V AC, certified by VDE (DIN EN 60670-1/-22 (VDE 0606-1/-22)), DLG (Ammonia resistance), knockouts, M20/M32/M40, (2 rear, 10 side), internal fixing points, with screwless terminals for standard indoor and protected outdoor installations

Accessories supplied:

4 attachment bushes IP55 M40 sealing range 17 - 30 mm,
1 sealing plug IP55 M40, cover retainer

Description	Order no.	PU
Abox SL-10² NEW grey, I _n =57 A, with raised screwless terminal block Wago 2010-1201, 5-pole, max. nominal cross-section in accordance with DIN EN 60998: 10 mm ² , clampable cross-sections per pole: 4 x 0.5 to 16 mm ² rigid/flexible Cu	■ 81044001	1/10

Abox SL 16²

252 x 202 x 120 mm



Junction box, protection class IP55/IP66, nominal cross-section 16 mm², U_i=690 V AC, certified by VDE (DIN EN 60670-1/-22 (VDE 0606-1/-22)), DLG (Ammonia resistance), knockouts, M20/M25/M32/M40/M50, (4 rear, 10 side), internal fixing points, with screwless terminals for standard indoor and protected outdoor installations

Accessories supplied:

4 attachment bushes IP55 M40 sealing range 17 - 30 mm,
1 sealing plug IP55 M40, cover retainer

Description	Order no.	PU
Abox SL-16² NEW grey, I _n =76 A, with raised screwless terminal block Wago 2016-1201, 5-pole, max. nominal cross-section in accordance with DIN EN 60998: 16 mm ² , clampable cross-section per pole: 4 x 0.5 to 16 mm ² rigid Cu and 4 x 0.5 to 25 mm ² flexible Cu	■ 81644001	1/4

Junction Boxes Abox Pro SLK

Abox Pro SLK 2,5²

92 x 92 x 60 mm



Junction box, protection class IP66/IP67/IP69, nominal cross-section 2.5 mm², U_i=450 V AC, certified by VDE (DIN EN 60670-1/-22 (VDE 0606-1/-22)), DLG (Ammonia resistance), DNV (Class: Ships and Offshore Installations), knockouts, M16/M20, (1 rear, 7 side), internal fixing points, with screwless terminals, for installation in industrial environments and unprotected outdoor areas

Accessories supplied:

4 double membrane seals IP66 M20 sealing range 7 - 13 mm, cover retainer

Description

Abox Pro SLK-2,5² **NEW**

grey, I_n=24 A, with 3 floor-fixed, screwless 3-wire terminals, Wago 221-413 - 2.5 mm², clampable cross-sections per pole: 3 x 0.2 to 2.5 mm² rigid Cu and 3 x 0.14 to 2.5 mm² flexible Cu

Order no. 40247001 PU 1/60

Abox Pro SLK 6²

152 x 152 x 85 mm



Junction box, protection class IP66/IP67/IP69, nominal cross-section 6 mm², U_i=450 V AC, certified by VDE (DIN EN 60670-1/-22 (VDE 0606-1/-22)), DLG (Ammonia resistance), DNV (Class: Ships and Offshore Installations), knockouts, M20/M25/M32, (2 rear, 10 side), internal fixing points, with screwless terminals, for installation in industrial environments and unprotected outdoor areas

Accessories supplied:

4 double membrane seals IP66 M32 sealing range 13 - 21 mm, cover retainer

Description

Abox Pro SLK-6² **NEW**

grey, I_n=41 A, with 5 raised, screwless 3-wire terminals, type Wago 221-613 - 6 mm², clampable cross-sections per pole: 3 x 0.2 to 6 mm² rigid/flexible Cu

Order no. 40647001 PU 1/12

Abox Pro SLK 4²

102 x 102 x 70 mm



Junction box, protection class IP66/IP67/IP69, nominal cross-section 4 mm², U_i=450 V AC, certified by VDE (DIN EN 60670-1/-22 (VDE 0606-1/-22)), DLG (Ammonia resistance), DNV (Class: Ships and Offshore Installations), knockouts, M16/M20/M25, (1 rear, 7 side), internal fixing points, with screwless terminals, for installation in industrial environments and unprotected outdoor areas

Accessories supplied:

4 double membrane seals IP66 M25 sealing range 9 - 17 mm, cover retainer

Description

Abox Pro SLK-4² **NEW**

grey, I_n=32 A, with 5 floor-fixed, screwless 3-wire terminals, Wago 221-413 - 4 mm², clampable cross-sections per pole: 3 x 0.2 to 4 mm² rigid Cu and 3 x 0.14 to 4 mm² flexible Cu

Order no. 40447001 PU 1/36

Junction Boxes Abox Pro SL

Abox Pro SL 4² 127 x 127 x 75 mm



Junction box, protection class IP66/IP67/IP69, nominal cross-section 4 mm², U_i=450 V AC, certified by VDE (DIN EN 60670-1/-22 (VDE 0606-1/-22)), DLG (Ammonia resistance), DNV (Class: Ships and Offshore Installations), knockouts, M20/M32, (1 rear, 7 side), internal fixing points, with screwless terminals, for installation in industrial environments and unprotected outdoor areas

Accessories supplied:

4 double membrane seals IP66 M32 sealing range
13 - 21 mm, cover retainer

Description	Order no.	PU
Abox Pro SL-4² NEW grey, I _n =32 A, with 5 raised screwless 3-wire terminal blocks, Wago 221-413, max. nominal cross-section in accordance with DIN EN 60998: 4 mm ² , clampable cross-sections per pole: 3 x 0.2 to 4 mm ² rigid Cu and 3 x 0.14 to 4 mm ² flexible Cu	■ 40444001	1/20

Abox Pro SL 6² 152 x 152 x 85 mm



Junction box, protection class IP66/IP67/IP69, nominal cross-section 6 mm², U_i=690 V AC, certified by VDE (DIN EN 60670-1/-22 (VDE 0606-1/-22)), DLG (Ammonia resistance), DNV (Class: Ships and Offshore Installations), knockouts, M20/M25/M32, (2 rear, 10 side), internal fixing points, with screwless terminals, for installation in industrial environments and unprotected outdoor areas

Accessories supplied:

4 double membrane seals IP66 M32 sealing range
13 - 21 mm, cover retainer

Description	Order no.	PU
Abox Pro SL-6² NEW grey, I _n =41 A, with raised screwless terminal block Wago 2006-1201, 5-pole, max. nominal cross-section in accordance with DIN EN 60998: 6 mm ² , clampable cross-sections per pole: 4 x 0.5 to 10 mm ² rigid/ flexible Cu	■ 40644001	1/10



Junction Boxes Abox Pro SL

Abox Pro SL 10²

182 x 182 x 90 mm



Junction box, protection class IP66/IP67/IP69, nominal cross-section 10 mm², U_i=690 V AC, certified by VDE (DIN EN 60670-1/-22 (VDE 0606-1/-22)), DLG (Ammonia resistance), DNV (Class: Ships and Offshore Installations), knockouts, M20/M32/M40, (2 rear, 10 side), internal fixing points, with screwless terminals, for installation in industrial environments and unprotected outdoor areas

Accessories supplied:

4 double membrane seals IP66 M40 sealing range 17 - 28 mm, cover retainer

Description	Order no.	PU
Abox Pro SL-10² NEW grey, I _n =57 A, with raised screwless terminal block Wago 2010-1201, 5-pole, max. nominal cross-section in accordance with DIN EN 60998: 10 mm ² , clampable cross-sections per pole: 4 x 0.5 to 16 mm ² rigid/flexible Cu	■ 41044001	1/10

Abox Pro SL 16²

252 x 202 x 120 mm



Junction box, protection class IP66/IP67/IP69, nominal cross-section 16 mm², U_i=690 V AC, certified by VDE (DIN EN 60670-1/-22 (VDE 0606-1/-22)), DLG (Ammonia resistance), DNV (Class: Ships and Offshore Installations), knockouts, M20/M25/M40/M50, (4 rear, 10 side), internal fixing points, with screwless terminals, for installation in industrial environments and unprotected outdoor areas

Accessories supplied:

4 double membrane seals IP66 M40 sealing range 17 - 28 mm, cover retainer

Description	Order no.	PU
Abox Pro SL-16² NEW grey, I _n =76 A, with raised screwless terminal block Wago 2016-1201, 5-pole, max. nominal cross-section in accordance with DIN EN 60998: 16 mm ² , clampable cross-sections per pole: 4 x 0.5 to 16 mm ² rigid Cu and 4 x 0.5 to 25 mm ² flexible Cu	■ 41644001	1/4

Junction Boxes Abox Pro XT SLK

Abox Pro XT SLK 2,5² 92 x 92 x 60 mm



Junction box, protection class IP68, nominal cross-section 2.5 mm², U_j=450 V AC, certified by VDE (DIN EN 60670-1/-22 (VDE 0606-1/-22) & DIN VDE V 0606-22-100), knockouts, M16/M20, (1 rear, 7 side), internal fixing points, with screwless terminals for encapsulation, for assembly in flooded areas and in the ground without traffic loads, for installations in the industrial environment and unprotected outside areas

Accessories supplied:

4 double membrane seals IP66 M20 sealing range 7 - 13 mm,
2 sealing plugs M20, 1 attachment bush M20, cover retainer,
1 cast resin bag GHB Pro 1 with filling funnel and disposable gloves

Description	Order no.	PU
Abox Pro XT SLK-2,5² NEW grey, I _n =24 A, with 3 floor-fixed, screwless 3-wire terminal blocks, Wago 221-413 - 2.5 mm ² , clampable cross-sections per pole: 3 x 0.2 to 2.5 mm ² rigid Cu and 3 x 0.14 to 2.5 mm ² flexible Cu	■ 40246001	1/1

Abox Pro XT SLK 4² 102 x 102 x 70 mm



Junction box, protection class IP68, nominal cross-section 4 mm², U_j=450 V AC, certified by VDE (DIN EN 60670-1/-22 (VDE 0606-1/-22) & DIN VDE V 0606-22-100), knockouts, M16/M20/M25, (1 rear, 7 side), internal fixing points, with screwless terminals for encapsulation, for assembly in flooded areas and in the ground without traffic loads, for installations in the industrial environment and unprotected outside areas

Accessories supplied:

4 double membrane seals IP66 M25 sealing range 9 - 17 mm,
2 sealing plugs M25, 1 attachment bush M25, cover retainer,
1 cast resin bag GHB2 with filling funnel and disposable gloves

Description	Order no.	PU
Abox Pro XT SLK-4² NEW grey, I _n =32 A, with 5 floor-fixed, screwless 3-wire terminal blocks, Wago 221-413 - 4 mm ² , clampable cross-sections per pole: 3 x 0.2 to 4 mm ² rigid Cu and 3 x 0.14 to 4 mm ² flexible Cu	■ 40446001	1/1

Junction Boxes Abox Pro XT SL

Abox Pro XT SL 4²

127 x 127 x 75 mm



Junction box, protection class IP68, nominal cross-section 4 mm², U_j=450 V AC, certified by VDE (DIN EN 60670-1/-22 (VDE 0606-1/-22) & DIN VDE V 0606-22-100), knockouts, M20/M32, (1 rear, 7 side), internal fixing points, with screwless terminals for encapsulation, for assembly in flooded areas and in the ground without traffic loads, for installations in the industrial environment and unprotected outside areas

Accessories supplied:

4 double membrane seals IP66 M32 sealing range 13 - 21 mm,
2 sealing plugs M20, 1 attachment bush M20, cover retainer,
1 cast resin bag GHB Pro 3 with filling funnel and disposable gloves

Description	Order no.	PU
Abox Pro XT SL-4² NEW grey, I _n =32 A, with 5 raised, screwless 3-wire terminal blocks, Wago 221-413 - 4 mm ² , clampable cross-sections per pole: 3 x 0.2 to 4 mm ² rigid Cu and 3 x 0.14 to 4 mm ² flexible Cu	■ 40546001	1/1

Abox Pro XT SL 6²

152 x 152 x 85 mm



Junction box, protection class IP68, nominal cross-section 6 mm², U_j=450 V AC, certified by VDE (DIN EN 60670-1/-22 (VDE 0606-1/-22) & DIN VDE V 0606-22-100), knockouts, M20/M25/M32, (2 rear, 10 side), internal fixing points, with screwless terminals for encapsulation, for assembly in flooded areas and in the ground without traffic loads, for installations in the industrial environment and unprotected outside areas

Accessories supplied:

4 double membrane seals IP66 M32 sealing range 13 - 21 mm,
2 sealing plugs M20, 1 attachment bush M20, cover retainer,
1 cast resin bag GHB Pro 4 with filling funnel and disposable gloves.

Description	Order no.	PU
Abox Pro XT SL-6² NEW grey, I _n =41 A, with 5 raised, screwless 3-wire terminal blocks, type Wago 221-613 - 6 mm ² , clampable cross-sections per pole: 3 x 0.2 to 6 mm ² rigid/flexible Cu	■ 40646001	1/1

Junction Boxes Abox Pro XT

Abox Pro XT 6² 127 x 127 x 75 mm



Junction box, protection class IP68, nominal cross-section 6 mm², U_i=690 V AC, certified by VDE (DIN EN 60670-1/-22 (VDE 0606-1/-22) & DIN VDE V 0606-22-100), knockouts, M20/M32, (1 rear, 7 side), internal fixing points, with screw terminals for encapsulation, for assembly in flooded areas and in the ground without traffic loads, for installations in the industrial environment and unprotected outside areas

Accessories supplied:

- 4 double membrane seals IP66 M32 sealing range 13 - 21 mm,
- 2 sealing plugs M20, 1 attachment bush M20, cover retainer,
- 1 cast resin bag GHB Pro 3 with filling funnel and disposable gloves

Description	Order no.	PU
Abox Pro XT-6² NEW grey, I _n =41 A, with raised screw terminal block, 5-pole - 6 mm ² , clampable cross-sections per pole: 4 x 1.5 mm ² , 4 x 2.5 mm ² , 4 x 4 mm ² , 4 x 6 mm ² rigid Cu/flexible with wire-end ferrule	■ 40645001	1/1

Abox Pro XT 10² 152 x 152 x 85 mm



Junction box, protection class IP68, nominal cross-section 10 mm², U_i=690 V AC, certified by VDE (DIN EN 60670-1/-22 (VDE 0606-1/-22) & DIN VDE V 0606-22-100), knockouts, M20/M25/M32, (2 rear, 10 side), internal fixing points, with screw terminals for encapsulation, for assembly in flooded areas and in the ground without traffic loads, for installations in the industrial environment and unprotected outside areas

Accessories supplied:

- 4 double membrane seals IP66 M32 sealing range 13 - 21 mm,
- 2 sealing plugs M20, 1 attachment bush M20, cover retainer,
- 1 cast resin bag GHB Pro 4 with filling funnel and disposable gloves

Description	Order no.	PU
Abox Pro XT-10² NEW grey, I _n =57 A, with raised screw terminal block, 5-pole- 10 mm ² , clampable cross-sections per pole: 4 x 2.5 mm ² , 4 x 4 mm ² , 4 x 6 mm ² , 4 x 10 mm ² rigid Cu/flexible with wire-end ferrule	■ 41045001	1/1



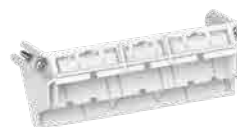
Abox / Abox Pro terminal blocks



Connecting terminal in accordance with DIN EN 60998 (VDE 0613), $U_i=690V$. For assembly in junction boxes Abox/Abox Pro from 2024 onwards.

Description	Order no.	PU
Abox 025/040 KLS-2,5²/4² NEW Screw terminal block for Abox/Abox Pro 025 and Abox/Abox Pro 040, 5-pole - 4 mm ² , $I_n = 41$ A, clampable cross-sections per pole: 4 x 1.5 mm ² , 4 x 2.5 mm ² , 4 x 4 mm ² Cu rigid	89640401	1/160
Abox 060 KLS-6² NEW Screw terminal block for Abox/Abox Pro 060, 5-pole - 6 mm ² , $I_n = 41$ A, clampable cross-sections per pole: 4 x 1.5 mm ² , 4 x 2.5 mm ² , 4 x 4 mm ² , 4 x 6 mm ² Cu rigid/flexible with wire-end ferrule	89640601	1/50
Abox 100 KLS-10² NEW raised screw terminal block for Abox/Abox Pro 100, 5-pole - 10 mm ² , $I_n = 57$ A, clampable cross-sections per pole: 4 x 2.5 mm ² , 4 x 4 mm ² , 4 x 6 mm ² , 4 x 10 mm ² Cu rigid/flexible with wire-end ferrule	89641001	1/60
Abox 160 KLS-16² NEW raised screw terminal block for Abox/Abox Pro 160, 5-pole - 16 mm ² , $I_n = 101$ A, clampable cross-sections per pole: 12 x 4 mm ² , 8 x 6 mm ² , 4 x 10 mm ² , 4 x 16 mm ² , 4 x 25 mm ² Cu rigid/flexible with wire-end ferrule	89641601	1/25
Abox 250/350 KLS-25²/35² NEW raised screw terminal block for Abox/Abox Pro 250/350, 5-pole - 35 mm ² , $I_n = 125$ A, clampable cross-sections per pole: 12 x 10 mm ² , 8 x 16 mm ² , 4 x 25 mm ² , 4 x 35 mm ² Cu rigid/flexible with wire-end ferrule	89643501	1/30

Abox/Abox Pro terminal holder



Terminal holder incl. fixing material for mounting of Wago installation and terminal boxes in Abox /Abox Pro junction boxes from 2024.

Description	Order no.	PU
Abox 025/040 KH 2273 2,5² NEW for position-fixed mounting of up to 6 terminals Wago 2273-205 in junction boxes Abox/Abox Pro 025 and 040 from 2024	89600201	20/120
Abox 025/040 KH 221 4² NEW for position-fixed mounting of up to 6 terminals Wago 221-413 in junction boxes Abox/Abox Pro 025 and 040 from 2024	89600301	20/240
Abox 060 KH 221 4² NEW for position-fixed and elevated mounting of up to 6 terminals Wago 221-413 in junction boxes Abox/Abox Pro 060 from 2024	89600401	1/100
Abox 100 KH 221 6² NEW for position-fixed and elevated mounting of up to 6 terminals Wago 221-613 in junction boxes Abox/Abox Pro 100 from 2024	89600501	1/50
Abox 100 KH 2006 6² NEW Clamp mount with standard rail NS35 for mounting of terminal blocks Type Wago 2006-1201 6 mm ² in junction boxes Abox/Abox Pro 100 from 2024	89600601	1/50
Abox 160 KH 2010 10² NEW Clamp mount with standard rail NS35 for mounting of terminal blocks Type Wago 2010-1201 10 mm ² in junction boxes Abox/Abox Pro 160 from 2024	89600701	1/50
Abox 250 KH 2016 16² NEW Clamp mount with standard rail NS35 for mounting of terminal blocks Type Wago 2016-1201 16 mm ² in junction boxes Abox/Abox Pro and 250 from 2024	89600801	1/50

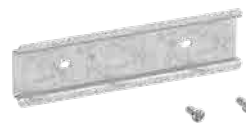
Abox/Abox Pro mounting plate



Mounting plate in melamine lined insulating material, 2.5 mm thickness, grey incl. fixing screws. For mounting in junction boxes Abox/Abox Pro from 2024.

Description	Order no.	PU
Abox MPI 060 NEW for Abox / Abox Pro 060	89510601	1/50
Abox MPI 100 NEW for Abox / Abox Pro 100	89511001	1/50
Abox MPI 160 NEW for Abox / Abox Pro 160	89511601	1/50
Abox MPI 250 NEW for Abox / Abox Pro 250	89512501	1/50
Abox MPI 350 NEW for Abox / Abox Pro 350	89513501	1/50

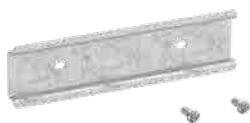
Abox/Abox Pro standard rails 35 mm



Standard rail in accordance with DIN EN 60715, 35 x 7.5 mm, incl. fixing screws. For mounting in junction boxes Abox/Abox Pro from 2024.

Description	Order no.	PU
Abox 060 NS35 NEW for Abox / Abox Pro 060	89530601	1/50
Abox 100 NS35 NEW for Abox / Abox Pro 100	89531001	1/50
Abox 160/250 NS35 NEW for Abox / Abox Pro 160	89531601	1/50
Abox 250/350 NS35 NEW for Abox / Abox Pro 350	89533501	1/50

Abox/Abox Pro standard rails 35 mm



Standard rail in accordance with DIN EN 60715, 35 x 7.5 mm, incl. fixing screws. For mounting in junction boxes Abox/Abox Pro from 2024.

Description	Order no.	PU
Abox 060 NS35 NEW for Abox / Abox Pro 060	89530601	1/50
Abox 100 NS35 NEW for Abox / Abox Pro 100	89531001	1/50
Abox 160/250 NS35 NEW for Abox / Abox Pro 160	89531601	1/50
Abox 250/350 NS35 NEW for Abox / Abox Pro 350	89533501	1/50

Abox partition wall



Partition wall in insulating material for separation of power circuits

Description	Order no.	PU
Abox TW 025/2 NEW for Abox 025/2	89500201	1/120

Junction Boxes Accesories Abox | Abox Pro

Abox sealing kit



Set for subsequent sealing of junction boxes, for Abox 025/040/060/100 from 2024

Description	Order no.	PU
Abox PST 025-100 NEW Set with two sealing caps and screws	89500101	1/500

Abox Pro cast resin bag



Cast resin bag for Abox Pro XT and Abox Pro XT SL, non-labelled with funnel and disposable gloves, Caution: Adhere to the use-by date of the cast resin bag

Description	Order no.	PU
GHB Pro 1 NEW for Abox Pro XT-2.5 ² and Abox Pro XT SLK-2.5 ² , content 250 ml	49252101	1/1
GHB Pro 2 NEW for Abox ProXT-4 ² and Abox Pro XT SLK-4 ² , content 400 ml	49252201	1/1
GHB Pro 3 NEW for Abox ProXT-6 ² and Abox Pro XT SLK-4 ² , content 750 ml	49252301	1/1
GHB Pro 4 NEW for Abox ProXT-10 ² and Abox Pro XT SLK-6 ² , content 1250 ml	49252401	1/1

Mast/pipe fixing set



Mast/pipe fixing set in stainless steel V2A with fastening screws and quick release clamp for mast/pipe diameters of 60 to 170 mm

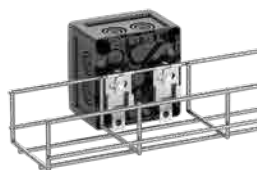
Description	Order no.	PU
MABF 65-1 NEW for junction boxes Abox / Abox Pro from 2024 onwards of the types Abox 025, Abox 025-2 (upright), Abox 040, Abox Pro 025, empty enclosure TK 99, TK 1309, small distribution board AK(i) 03	89601001	1/50
MABF 65-2 NEW for empty enclosure TK 77, TK 97, TG 88, TG 1208, TG 1212	89601101	1/50
MABF 65-3 NEW for empty enclosure TK 1809, TK 1811, AK(i) 05	89601201	1/50
MABF 100-1 NEW for junction boxes Abox / Abox Pro from 2024 onwards of the types Abox 025/2 (transverse), Abox 060, Abox 100, Abox Pro 040, Abox Pro 060, Abox Pro 100. Empty enclosure TK 1111, TK 1313, TK 1813 (2 sets required)	89602001	1/50
MABF 150-1 NEW for junction boxes Abox / Abox Pro from 2024 onwards of the types Abox 160, Abox Pro 160	89603001	1/50
MABF 150-2 NEW for junction boxes Abox / Abox Pro from 2024 onwards of the types Abox 250 (upright), Abox Pro 250 (upright)	89603101	1/50
MABF 150-3 NEW for empty enclosure TK 1818, TK 2518. Small distribution boards AK(i) 09, AK(i) 12	89603201	1/50
MABF 150-4 NEW for empty enclosures TG 2015, TG 2516	89603301	1/50
MABF 215-1 NEW for junction boxes Abox / Abox Pro from 2024 onwards of the types Abox 250 (transverse), Abox Pro 250 (transverse) Abox Pro 350, Abox Pro 350	89604001	1/50

Fastening parts



Fixing element for mounting of enclosure on cable tray systems with elongated hole width of 7 mm and mesh cable trays with Schnabl GTH 9001 mounts. With pan head screw 4 x 12, material PA6 grey, Set = 10 pieces

Description	Order no.	PU
KTB 1 NEW	89600901	1/20



Application KTB 1 (89600901) on cable tray system.

Cable gland, grey, with locknut



Cable gland, IP68, with strain relief, polyamide, M_ x 1.5 mm, with locknut, grey

Description	Sealing range	Thread lenght	Order no.	PU
KVR M12-MGM	2 - 6,5 mm	8 mm	22741201	100/600
KVR M16-MGM	4 - 10,0 mm	8 mm	22741601	75/450
KVR M20-MGM	6 - 12,0 mm	9 mm	22742001	50/300
KVR M20-GDB/MGM	7 - 14,0 mm	9 mm	22742101	30/180
KVR M25-MGM	9 - 16,0 mm	11 mm	22742501	25/150
KVR M32-MGM	11 - 21,0 mm	11 mm	22743201	10/60
KVR M40-MGM	16 - 28,0 mm	11 mm	22744001	5/30
KVR M50-MGM	27 - 34,5 mm	13 mm	22745001	5/30
KVR M63-MGM	30 - 44,5 mm	17 mm	22746301	5/50

Cable gland, black, with locknut



Cable gland, IP68, with strain relief, polyamide, M_ x 1.5 mm, with locknut, black

Description	Sealing range	Thread lenght	Order no.	PU
KVR M16-MGM/sw NEW	4 - 10 mm	8 mm	22701601	75/450
KVR M20-MGM/sw	6 - 12 mm	9 mm	22702001	50/300
KVR M20-GDB/MGM/sw	7 - 14 mm	9 mm	22702101	30/180
KVR M25-MGM/sw	9 - 16 mm	11 mm	22702501	25/150
KVR M32-MGM/sw	11 - 21 mm	11 mm	22703201	10/60
KVR M40-MGM/sw	16 - 28 mm	11 mm	22704001	5/30
KVR M50-MGM/sw	27 - 34,5 mm	13 mm	22705001	50/300

Junction Boxes Accessories Abox | Abox Pro

Double membrane seals, grey



Double membrane seals, IP66, with two sealing membranes, closed, thermoplastic elastomer (TPE), for wall thicknesses 1.5 - 4.5 mm, grey

Description	Sealing range	Order no.	PU
DMS M16	5 - 9 mm	26041601	50/600
DMS M20	7 - 13 mm	26042001	50/600
DMS M25	9 - 17 mm	26042501	50/600
DMS M32	13 - 21 mm	26043201	25/300
DMS M40	17 - 28 mm	26044001	30/180

Attachment bushes, grey



Mounting socket IP55, with open sealing membrane, thermoplastic elastomer (TPE), for wall thicknesses from 1.5 - 4.0 mm, grey

Description	Sealing range	Order no.	PU
AST M16	6 - 10 mm	23041601	50/600
AST M20	8 - 13,5 mm	23042001	50/600
AST M25	9 - 18,5 mm	23042501	50/300
AST M32	13 - 23 mm	23043201	25/150
AST M40	17 - 30 mm	23044001	20/120

Double membrane seals, black



Double membrane seals, IP66, with two sealing membranes, closed, thermoplastic elastomer (TPE), for wall thicknesses 1.5 - 4.5 mm, black

Description	Sealing range	Order no.	PU
DMS M16/sw	5 - 9 mm	26001601	50/600
DMS M20/sw	7 - 13 mm	26002001	50/600
DMS M25/sw	9 - 17 mm	26002501	50/600
DMS M32/sw	13 - 21 mm	26003201	25/300
DMS M40/sw NEW	17 - 28 mm	26004001	30/180

Sealing plug, grey



Sealing plugs, IP55, with closed sealing membrane, thermoplastic elastomer (TPE), for wall thickness 1.5 - 4.0 mm, for sealing of metric housing apertures that are not required, grey

Description	Sealing range	Order no.	PU
VST M16	6 - 10 mm	23141601	100/1200
VST M20	8 - 13,5 mm	23142001	100/1200
VST M25	9 - 16 mm	23142501	50/600
VST M32	13 - 23 mm	23143201	50/600
VST M40	17 - 30 mm	23144001	25/300

Double membrane seals white



Double membrane seals, IP66, with two sealing membranes, closed, thermoplastic elastomer (TPE), for wall thicknesses 1.5 - 4.5 mm, white

Description	Sealing range	Order no.	PU
DMS M16/w NEW	5 - 9 mm	26011601	50/600
DMS M20/w	7 - 13 mm	26012001	50/600
DMS M25/w	9 - 17 mm	26012501	50/600
DMS M32/w NEW	13 - 21 mm	26013201	25/300



Visit us:



Günther Spelsberg GmbH + Co. KG

Headquarters

Im Gewerbepark 1
D-58579 Schalksmühle
Tel.: +49 (0) 23 55 / 8 92-0
Fax: +49 (0) 23 55 / 8 92-299
E-Mail: info@spelsberg.de
Internet: www.spelsberg.de

Buttstädt Factory

Vor dem Lohe 3
D-99628 Buttstädt
Tel.: +49 (0) 3 63 73 / 98-400
Fax: +49 (0) 3 63 73 / 98-499