

## The safest way to use electricity

For 70 years, Doepke Schaltgeräte GmbH has been developing residual current protection technology. Today, the name Doepke is synonymous with the highest levels of safety when working with electricity.



Doepke Schaltgeräte  
safety **Made in Germany**





## Quality from a single source

*Doepke products are manufactured in Norden, Germany, with a production depth of 90 %. This means that almost all components — from the circuit board to the plastic housing — are produced in-house.*

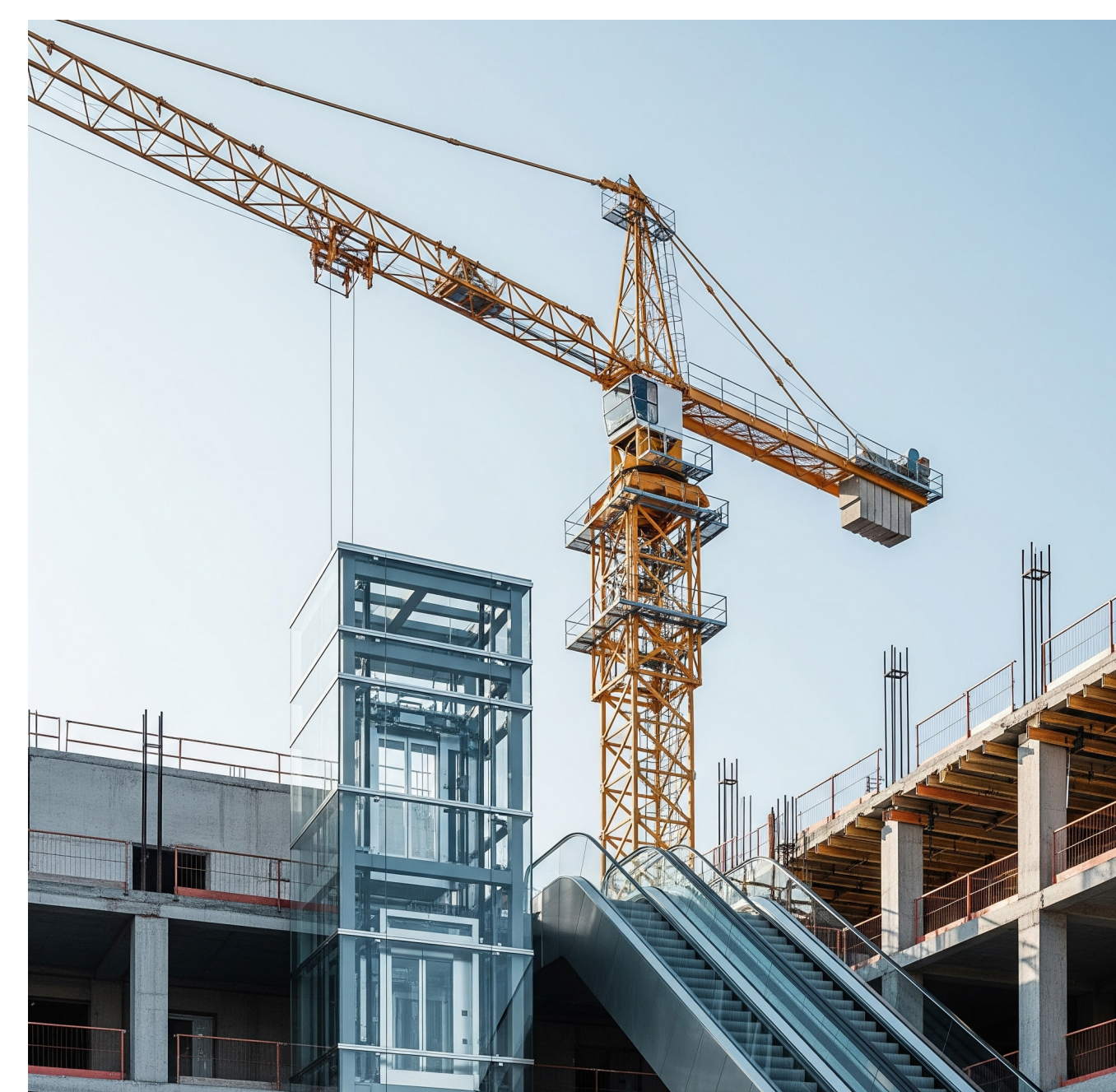


## The highest quality standards

Doepke ensures quality by thoroughly testing every single residual current circuit breaker after production. Each one undergoes a total of 24 tests. Only then does each RCD receive its individual serial number.

## Standard products and customized solutions

New requirements call for new products: Doepke's development department designs both standard products and specialized solutions tailored to your specific needs. If you have a specific requirement, feel free to contact us.





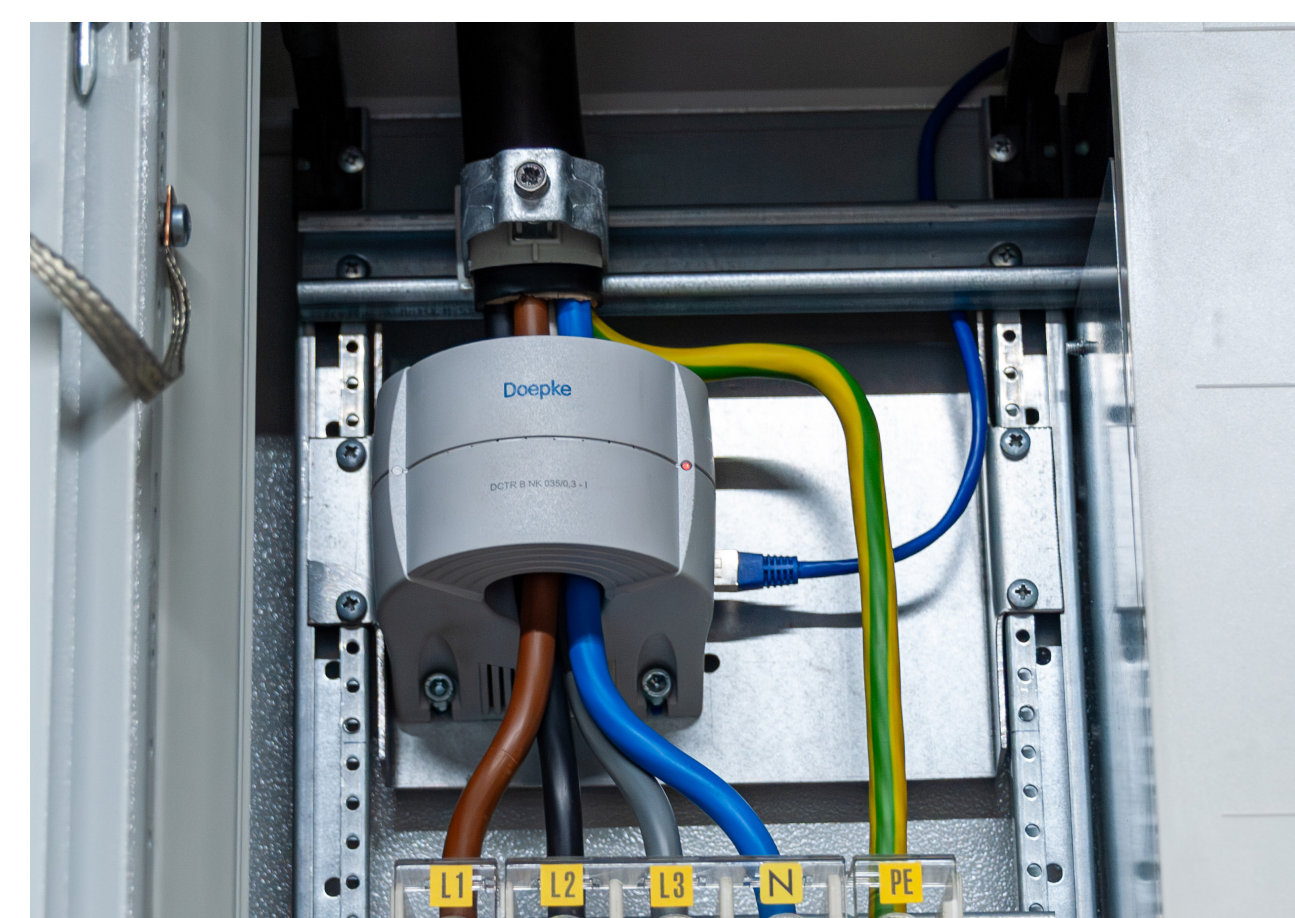
## Products

*The Doepke product portfolio includes all common types and standards of residual current circuit breakers, miniature circuit breakers, residual current monitors, as well as a wide range of special solutions and accessories.*

### RCM

*residual current monitors*

A residual current monitor (RCM) records and monitors residual currents in electrical installations and report them without switching off the system.



### RCCB

*residual current circuit-breakers*

An RCCB is a residual current protection device, also known as an RCD (Residual Current Device). It protects people, animals, and equipment from dangerous fault currents by disconnecting the power supply if dangerous high residual currents occur.



### RCBO

*RCCB/MCB combination*

RCBOs combine residual current and short-circuit as well as overcurrent protection in one device. Ideal for distribution boards with limited space.



### MCB

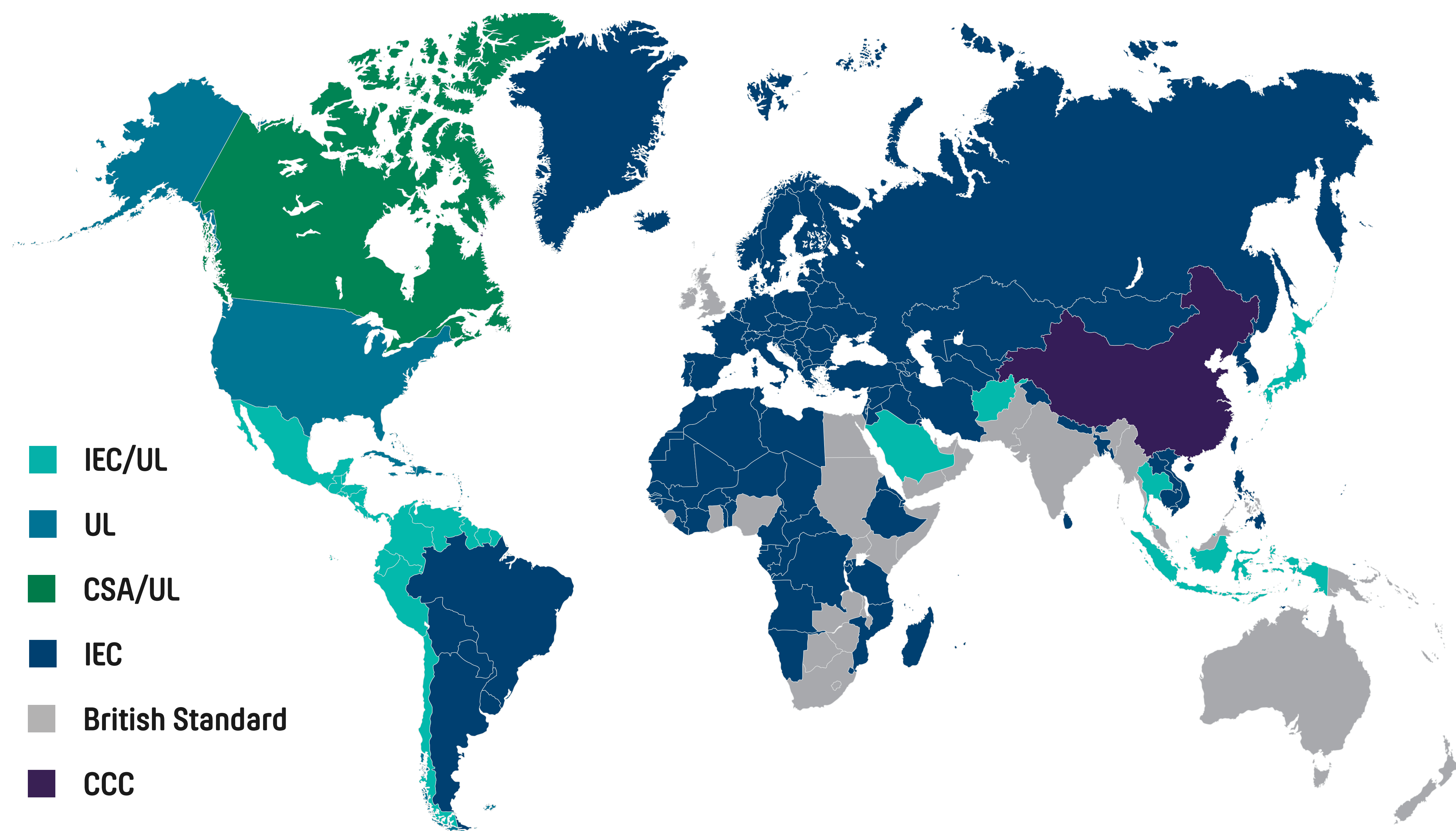
*miniature circuit-breakers*

Miniature circuit breakers automatically disconnect circuits in order to protect lines and connected devices. After disconnection, they can be manually reactivated without the fuse.



## International standards

IEC (International Electrotechnical Commission) and UL (Underwriters Laboratories Inc.) are international standardisation organisations for standards in the field of electrical engineering and electronics. In most countries, either IEC or UL standards are valid. Both standards differ significantly. Doepke has products of both standards in its product portfolio.



## Doepke

**Doepke Schaltgeräte GmbH**  
Stellmacherstraße 11  
26506 Norden | Germany  
**Headquarter**

@ - [info@doepke.de](mailto:info@doepke.de)  
T - +49 (0) 49 31 18 06 0  
F - +49 (0) 49 31 18 06 101



[www —doepke.de/en](http://www.doepke.de/en)

**Doepke UK. LTD.**  
3 Bentley Way  
Royal Oak Industrial Estate  
NN11 8QH Daventry | Northants

@ - [sales@doepke.co.uk](mailto:sales@doepke.co.uk)  
T - +44 (0) 1628 82 91 33



[www —doepke.co.uk](http://www.doepke.co.uk)

**Doepke Middle East (FZE)**  
Q3-121, SAIF Zone  
P.O. Box: 9541 | Sharjah - U.A.E.

@ - [cleetez@doepke-me.com](mailto:cleetez@doepke-me.com)  
T - +971 6 5641 106  
M - +971 050 3032 485



[www —doepke-me.com](http://www.doepke-me.com)