

energy-saving
ecological
modern



BUILDING SOCIETIES
REAL ESTATE DEVELOPERS
HOUSING CO-OPERATIVES
Comprehensive lighting solutions

MODERNISE LIGHTING – SAVE ENERGY
AND PROTECT THE ENVIRONMENT



www.lenalighting.pl



Advantages of modernisation in lighting

LOWER ENERGY CONSUMPTION

Using radio motion sensors and LED diodes helps save 90% of the energy.

PROTECTION AGAINST THEFT

Installation of light fittings with diffusers secured by screws, and equipped with industrial light sources reduces the risk of theft.

LOWER SERVICING COSTS

Using energy-saving light sources reduces the frequency of diffuser maintenance.

BETTER COMFORT OF USING PREMISES

Modern fittings increase in the usage comfort thanks to the following: saving energy costs, larger quantity of light with simultaneous utilisation of low-power sources, the aesthetic quality of diffusers.

AESTHETIC QUALITY OF DIFFUSERS

Modern design makes our diffusers look good in every room.





Limited energy consumption when using modern light fittings

In case of light fittings, energy-saving and can be obtained thanks to using energy-saving light sources, such as:

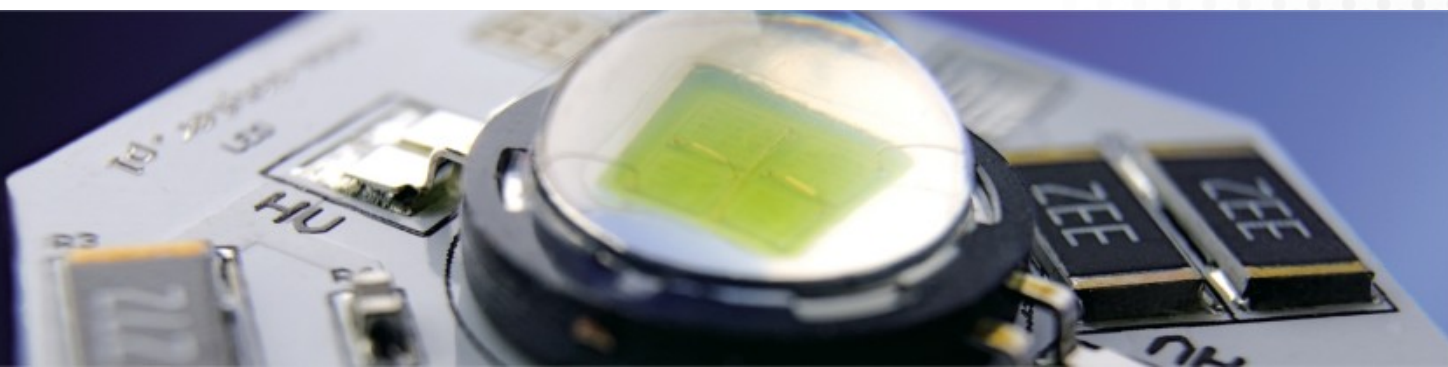
- ✓ regular (linear) fluorescent tubes
- ✓ compact fluorescent tubes
- ✓ Power LED diodes

Comparison of the efficiency of specific light sources:

- ✓ incandescent light source (standard light bulb) - 15 lm/W
- ✓ compact fluorescent lamp - 55 lm/W
- ✓ regular (linear) fluorescent lamp - 90 lm/W
- ✓ Power LED diode - 120 lm/W

A comparison of energy consumption between traditional incandescent light bulb fitting and Power LED fitting. Both fittings emit the same stream of light:

	CAMEA 75W	CAMEA 9W LED
Power of the fitting	75W	9W
Daily time of lighting	8h	8h
Number of days in the year	365 days	365 days
Cost of electricity	0,55 PLN / kWh	0,55 PLN / kWh
Annual consumption of electricity	219 000W	26 280W
Annual cost of used electricity	120,45 PLN	14,30 PLN
SAVINGS	-	106,15 PLN





RMS technology reduces energy consumption

Using radio motion sensors (RMS) in light fittings allows to save more than 90% of energy. Using our fittings equipped with radio motion sensors ensures that the fitting would provide light when needed. Most of the savings can be achieved by using the fittings in such areas as:

- ✓ staircases
- ✓ corridors
- ✓ garages
- ✓ storage rooms
- ✓ sanitary room
- ✓ public utility buildings
- ✓ lighting outside the buildings

RMS sensors:

- ✓ Save energy.
- ✓ Invisible from outside.
- ✓ Do not reduce tightness of the fitting.

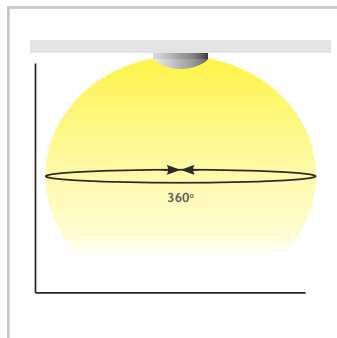
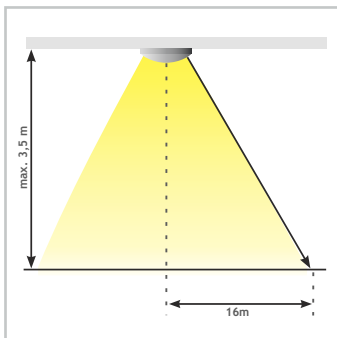
High-frequency electromagnetic wave radio transmission motion sensors used by our company have a wide range of detection area adjustment, and can detect motion up to 16 meters. They also have “day-night” identification feature which helps to limit the operation of the fitting to specific ambient light intensity conditions - the adjustment range is 3-2000LUX. Light fittings equipped with RMS sensors, depending on the needs, can also have different switch off times - from 10 seconds to 12 minutes. This parameter makes it possible to adjust the time of lighting to minimum.



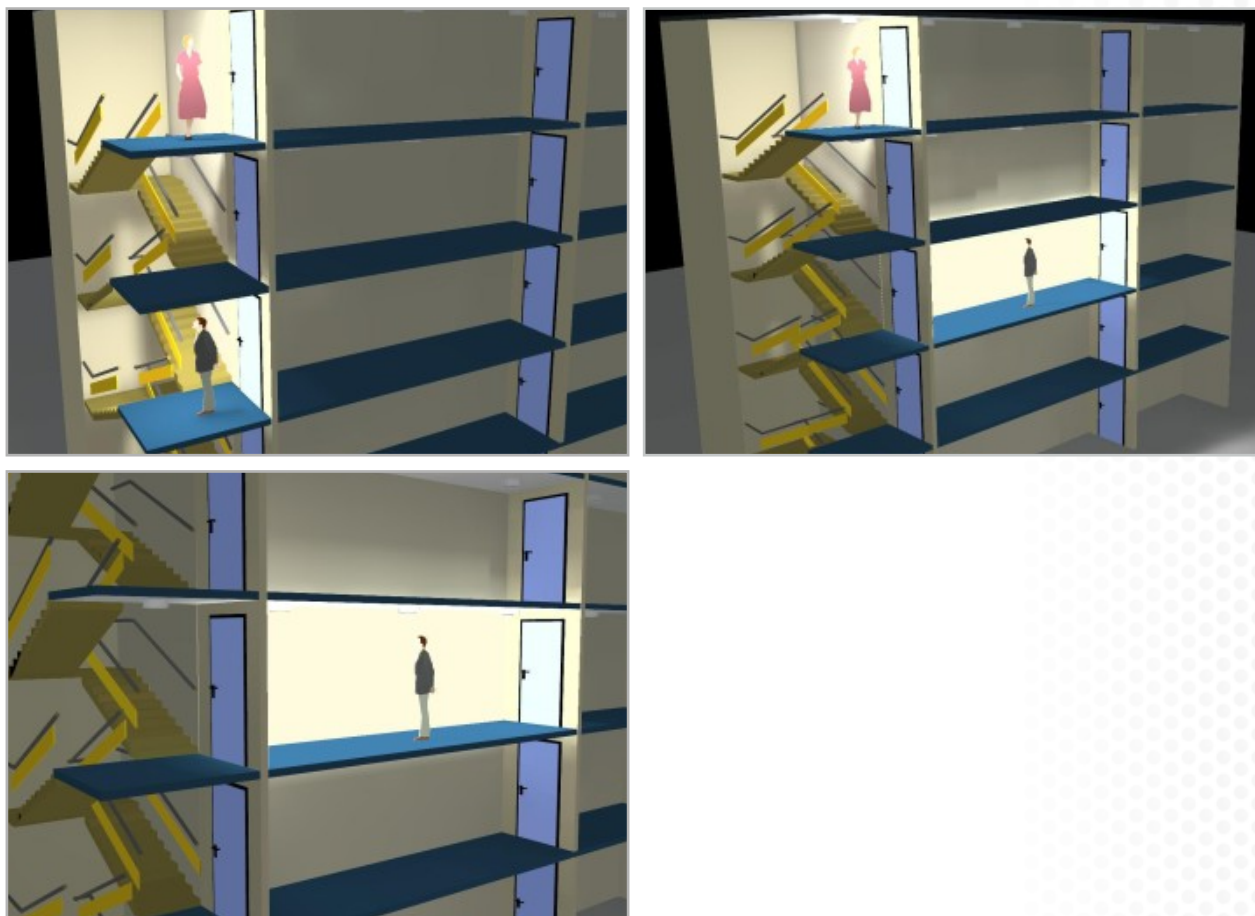
setting of surroundings
brightness: 3-2000LUX

temporary delay of switch-off:
between 10 seconds and
12 minutes

adjustment of detection
distance: 2 - 16 meters



FLEXIBILITY OF RMS SENSOR FITTINGS' OPERATION



A COMPARISON OF ENERGY CONSUMPTION BETWEEN A TRADITIONAL INCANDESCENT LIGHT BULB FITTING AND A LED FITTING EQUIPPED WITH RMS.

	CAMEA 75W	CAMEA LED 9W RMS
Power of the fitting	75W	9W
Time saving thanks to RMS sensor application	-	90%
Daily time of lighting	8h	8h
Number of days in the year	365 days	365 days
Cost of electricity	0,55 PLN / kWh	0,55 PLN / kWh
Annual consumption of electricity	219 000W	26 280W
Annual cost of used electricity	120,45 PLN	14,30 PLN
SAVINGS	-	119,02 PLN

Theft protection

There are several methods to limit the theft of light sources from the fittings installed in generally accessible areas:

using fittings with secured diffusers



using fittings equipped with industrial light sources not commonly used at home



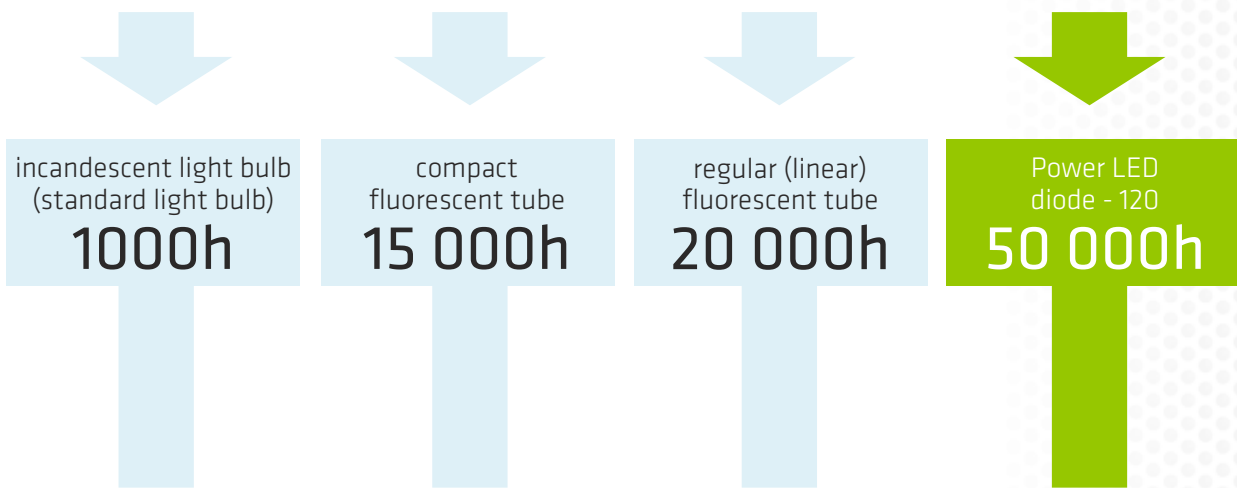
using fittings with LED technology where the light source is integrated with the lamp



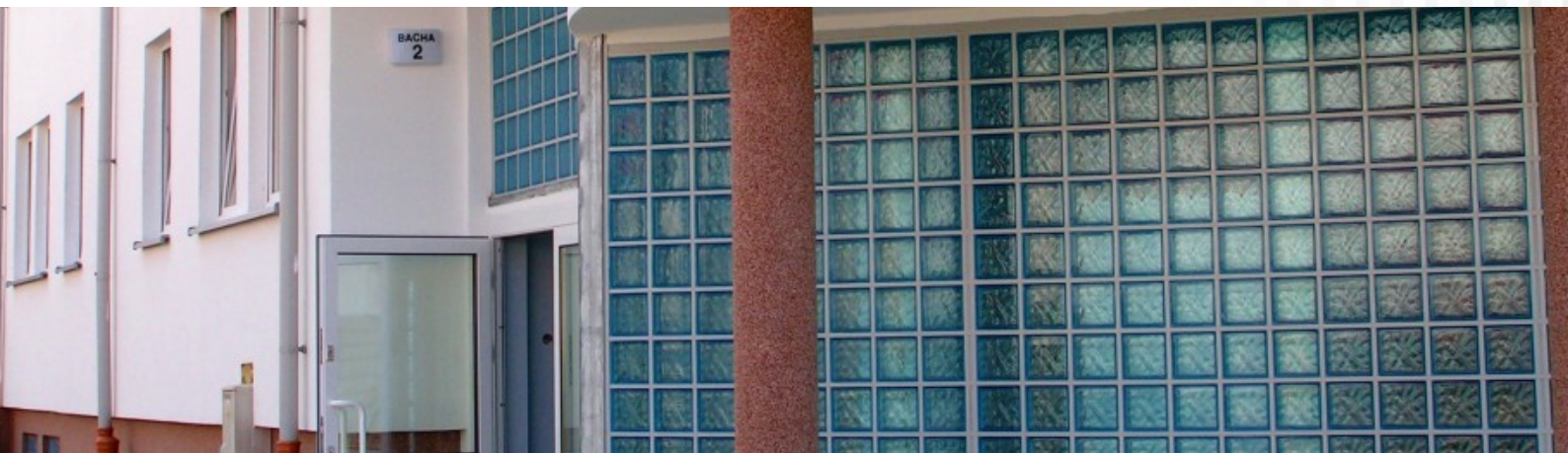
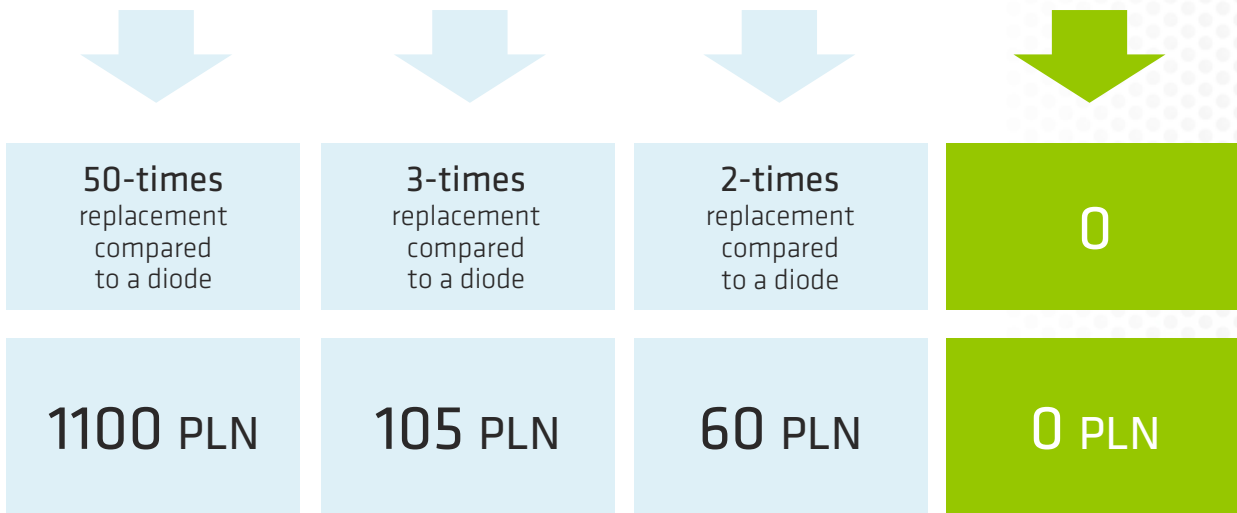
Lower servicing costs

Using modern light sources results in savings on replacement costs.

Below we show life time of specific types of light sources:



Necessity to replace light sources:

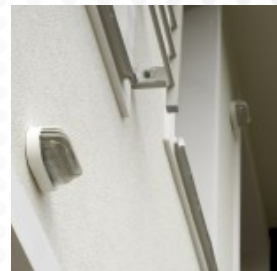


PLAFONDS



The most extensive offer of plafonds adjusted to modern light sources (energy-saving fluorescent tubes, LED diodes, etc.) allows to save on operational costs. High protection class (IP54, IP65), and manufacturing the fittings from materials highly resistant to mechanical damage, makes it possible to use them both inside and outside the buildings.

Application: elevation lighting, staircases, basements, corridors.



RMS PLAFONDS



We offer a wide range of plafonds equipped with RMS motion sensor allowing to save more than 90% of energy. Using RMS motion sensors enables to keep high protection class of the fitting (IP44, IP54, IP65).

Application: elevation lighting, staircases, basements, corridors.

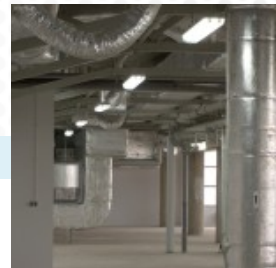


HIGH PROTECTION CLASS FITTINGS



High protection class fittings (IP65, IP44) are manufactured from materials highly resistant to mechanical damage. Well-considered design enables installation and simple servicing.

Applikation: garages, halls and corridors, elevation lighting

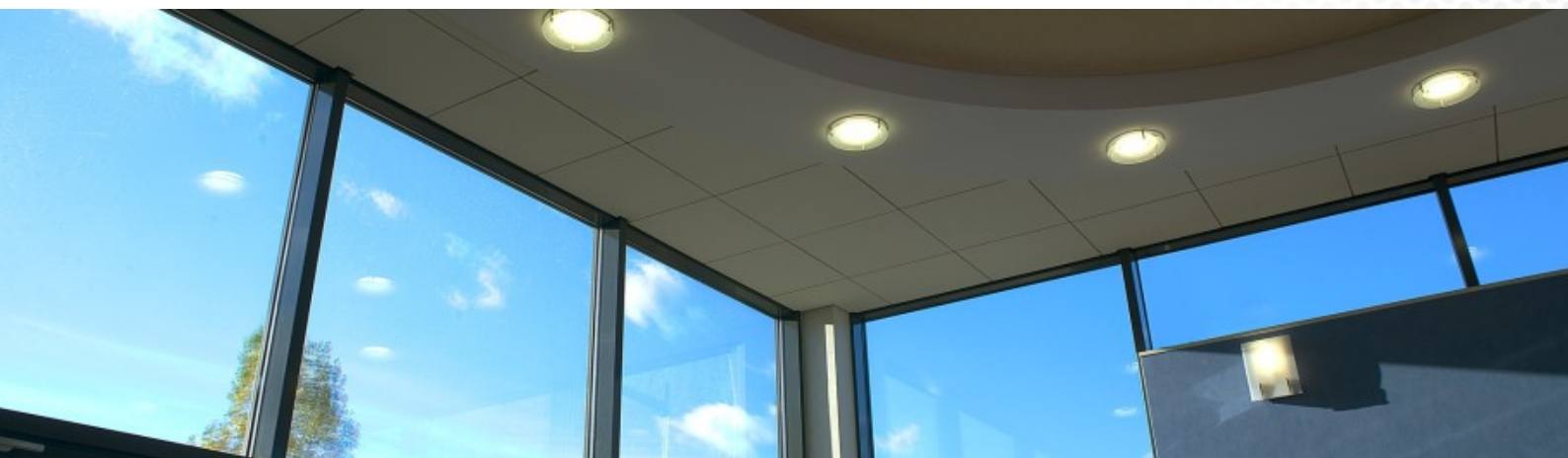
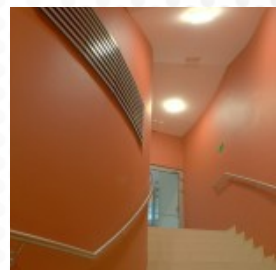
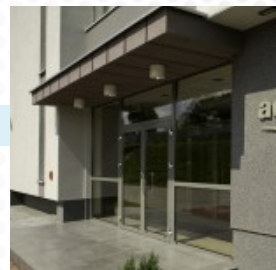


DOWNLIGHT



A family of a surface mounted fittings and fittings for suspended ceilings. Varied design makes it possible to personalise interiors.

Applikation: corridors, offices.



STREET LAMPS



A family of energy-saving fittings and Power LED fittings with extensive application their advantage is quick installation, simple and inexpensive utilisation.

Application: illuminating of car parks, park paths and streets.

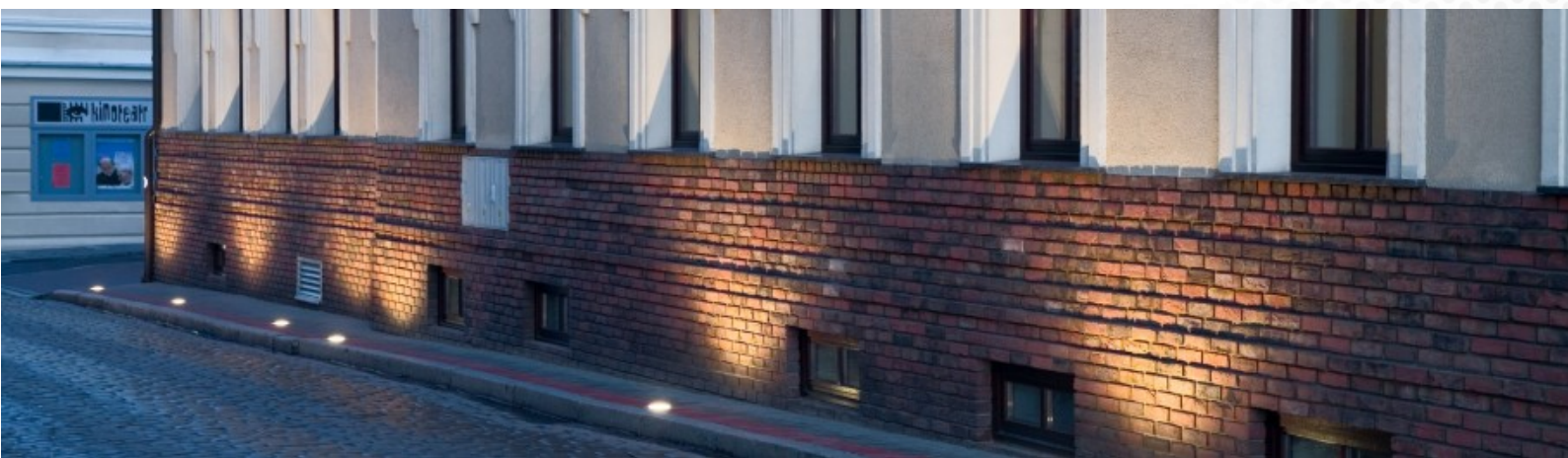


OUTDOOR FITTINGS



A wide range of fittings designed for illuminating of the outdoor areas. A choice between three types of body materials (plastic, aluminium, stainless steel), and between a few dozen of different models of lamps, helps to select lamps for every type of surroundings.

Application: pathways, halls, corridors and staircases, outdoor lighting.





Lena Lighting S.A.
ul. Kórnicka 52, 63-000 Środa Wlkp.
tel. +48 (061) 28 60 300
fax. +48 (061) 28 54 059



www.lenalighting.pl