

english

# theben®

## PlanoCentro compact passivo



Presence detector  
for ceiling installation



Perfect Light Control

# PlanoCentro presence detector for ceiling installation



PlanoCentro

## PlanoCentro

Flush ceiling installation for false and solid ceilings

Ingenious technology encapsulated in a flat design

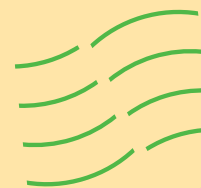
Square detection area of 100 m<sup>2</sup> (10 x 10 m) for ceiling heights of 3.5 m

Quick set-up via 6 basic configurations on device

Optimised sensor allocation provides constant sensitivity in all directions of motion

Covers to suit room decor in a range of colours and materials

Remote control for simple and time-saving configuration. The remote control makes it possible to select and overwrite the parameters.





PlanoCentro controls more than just lighting and provides the highest levels of energy efficiency. It also controls room temperatures as required - it switches heating, ventilation and air conditioning systems when the room is occupied and the energy consumers are automatically switched off or turned down when the room is unoccupied.

The discreet PlanoCentro presence detector offers new solutions for energy-saving lighting, heating, ventilation and air conditioning control in offices, schools and public buildings.



Installation in false ceilings with catch mounting and strain relief clips for connections. The PlanoCentro presence detector has a simple push-in fitting for mounting in false ceilings.



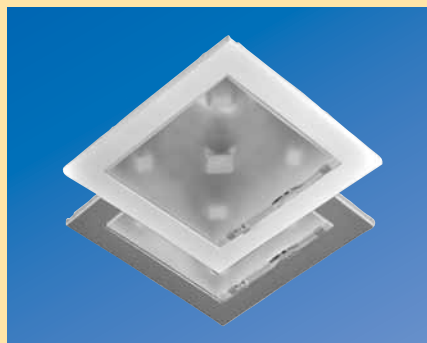
Installation in concrete using Agro/Kaiser flush-mounted socket for empty conduit connection. Robust metal frame for screw fixing to ceilings.



Time-saving installation through easy accessible screwless terminals with large terminal area. Strain relief provided by cable straps. Terminal box cover plate provides protection against handling.



Fast setup via 6 basic configurations on device. The following operating modes are available: Fully or semi-automatic with a choice of bright, medium or dark switching points.



Elegant covers in a range of standard colours to suit any room decor: white, black or silver.



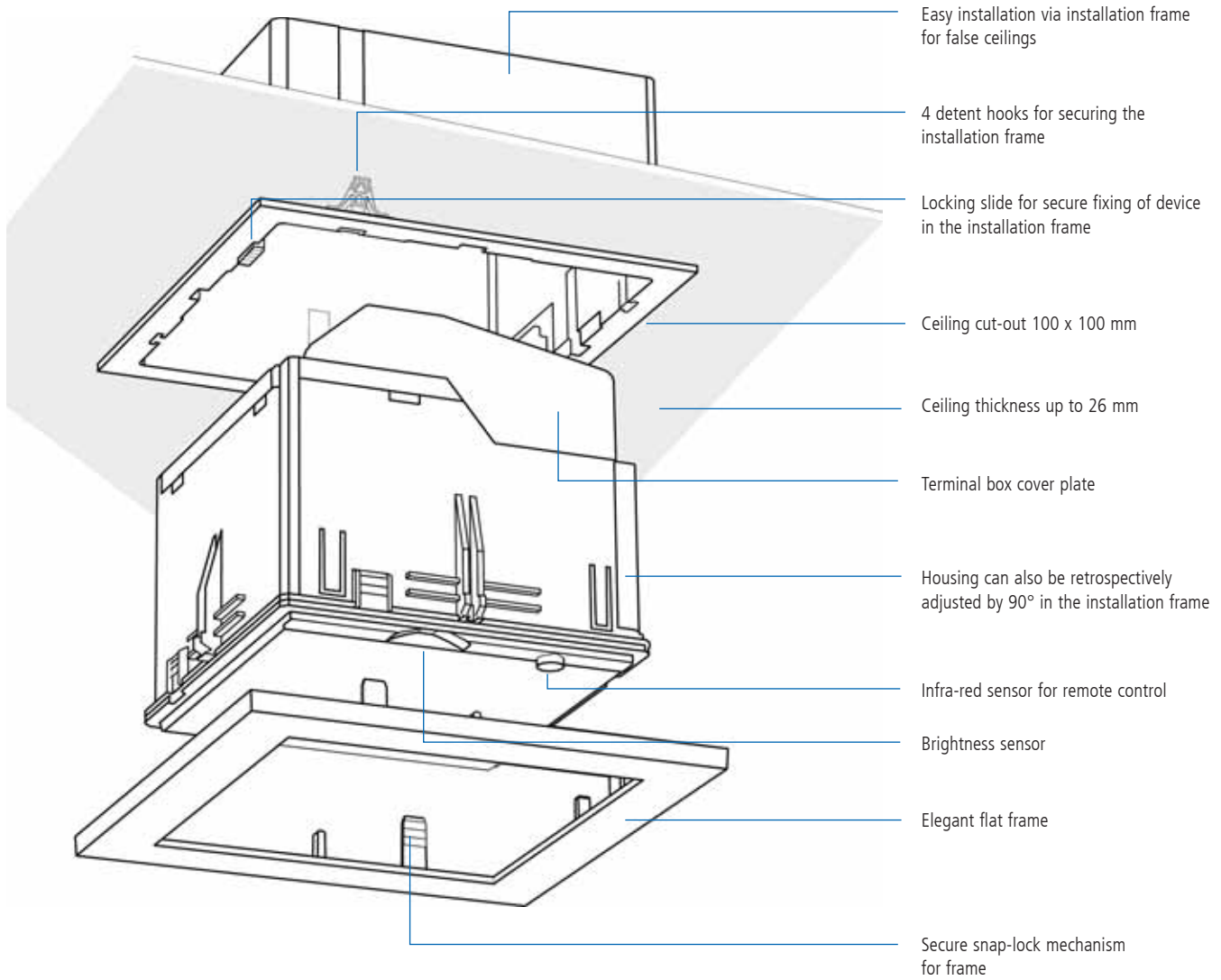
The theben HTS presence detector can be set using the SendoPro remote control. The PlanoCentro allows parameters to be selected, changed and managed. The presence detector can be set up quickly by sending individual parameters or parameter sets. They can be stored according to object in the internal memory or saved on an SD card.

# PlanoCentro presence detector

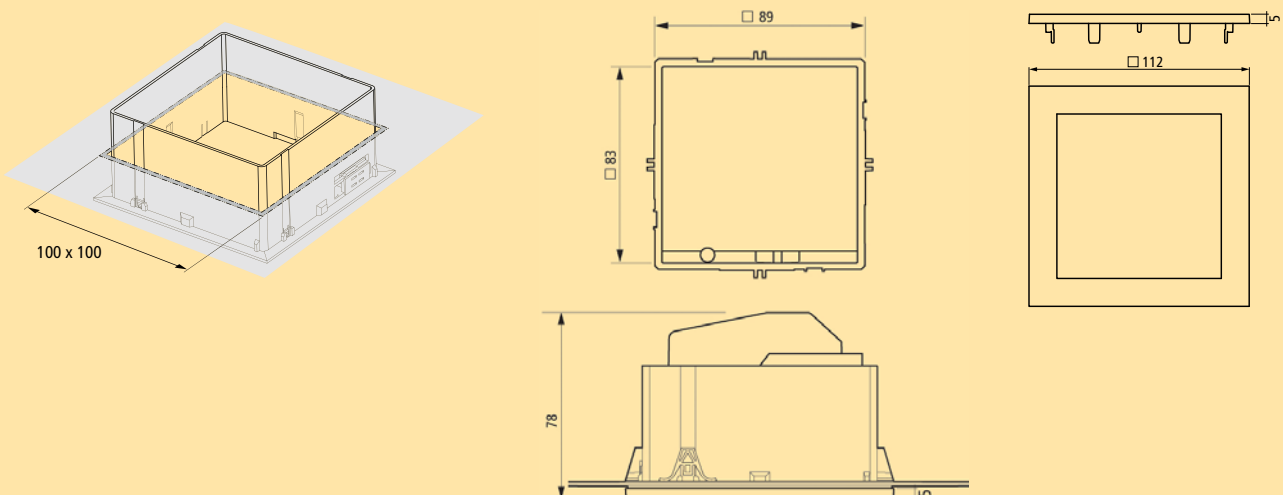
## Installation in false ceilings



### PlanoCentro for installation in false ceilings



Dimension diagrams (mm): PlanoCentro

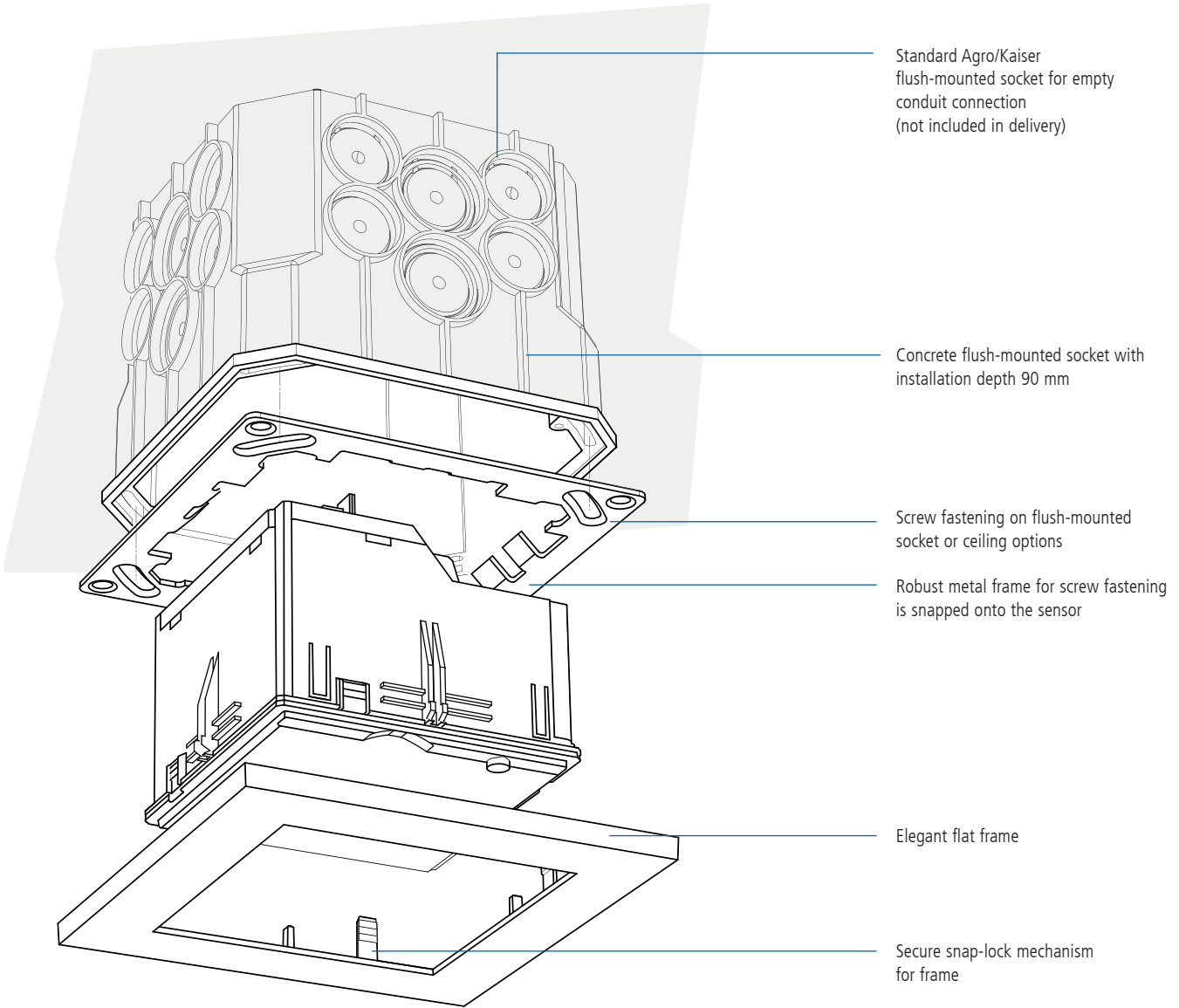


# PlanoCentro presence detector

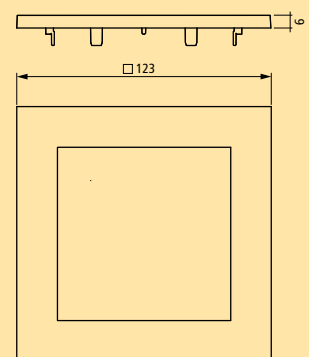
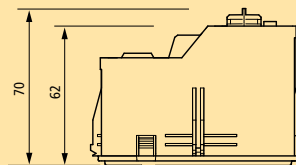
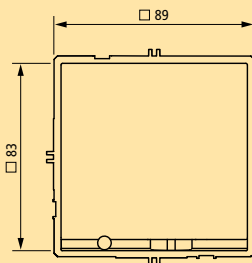
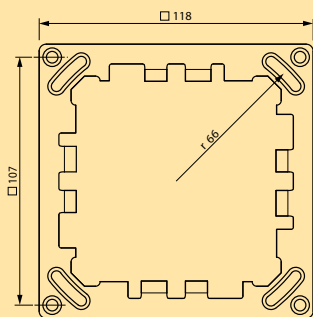
## Installation in concrete sleeve



### PlanoCentro for installation in concrete sleeve



Dimension diagrams (mm): PlanoCentro



# PlanoCentro presence detector for ceiling mounting



**New**

PlanoCentro 101-EWH  
PlanoCentro 000-EWH

- **PlanoCentro**
- Passive infra-red presence detector
- square 360° detection range allows accurate and simple planning
- flat design
- exchangeable cover with choice of shapes, colours and materials
- Mixed light measurement
- presence and brightness-dependent control for lighting and HVAC systems
- Choice of fully or semi-automatic lighting control
- Connection option for sensors or switches for manual switching with automatic recognition
- Adjustable sensitivity
- Can be configured remotely
- 6 predefined basic settings on presence detector
- Installation with mechanical stop
- Lighting control with light threshold value and self-learning run-on time
- Pulse function for staircase light timer
- Presence output with switch-on delay and run-on time
- Room monitoring with selective movement detection
- Management remote control SendoPro 868-A (optional)
- Parameters can be selected for subsequent changes
- SendoClic user remote control (optional)



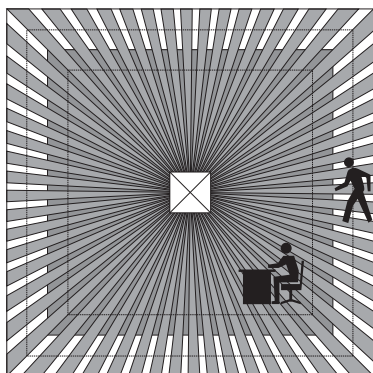
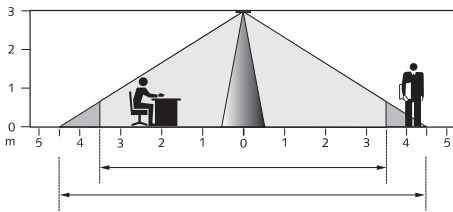
**New**

PlanoCentro 101-UWH  
PlanoCentro 000-UWH

- **PlanoCentro 101-UWH with installation set for flush-mounting (concrete ceiling)**
- with metal installation frame for screwed fixing in wooden ceilings or in flush-mounted sockets for concrete ceilings, flush-mounted socket not included in delivery
- **PlanoCentro 101-EWH with installation set for mounting in ceilings (wooden ceilings)**
- with installation frame for wooden ceilings and cover

- **PlanoCentro 000-EWH or UWH (Slave)**
- **Devices for extending detection range**
- via parallel switching (without switch outputs)

Detection range (installation height 3.0 m)



## Common function

- The switching behaviour of the presence detector is controlled by presence and light.
- The lighting switches on with darkness and presence and off with sufficient light or absence
- The self-learning run-on time adjusts to occupants' behaviour
- Fully or semi-automatic: In "Fully automatic" mode, the lighting switches on and off automatically according to presence and light. In "Semi automatic" mode, it must be switched on manually and switches off automatically
- Manual override: Lighting can be manually controlled at any time
- The presence detector has "Genuine light measurement" and is suitable for switching fluorescent lamps (FL/PL) halogen and incandescent lamps
- Simple setting using rotary switch with 6 predefined configuration sets
- Presence output for HVAC control: Switching behaviour is only controlled by presence
- Extended detection area
- Master/master parallel switching: Up to 10 presence detectors can be connected with each other to control several lighting groups. Each master controls its lighting group according to its own brightness measurements. Presence is detected by all the detectors
- Parameters can be selected via the SendoPro
- Test operation mode checks the detection range and configuration

## Accessories:

- The extended setting of parameters is achieved via the optionally-available management remote control SendoPro (order no. 907 0 675)
- The SendoClic user remote control (order no. 907 0 690) allows the individual switching of up to two lighting groups.
- Covers available in a range of colours
- Installation and paint protection cover provides optimum protection during building work

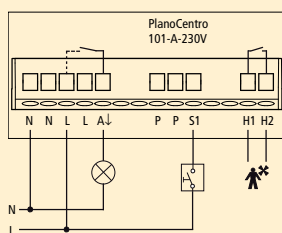
## Detection range:

Min. height	seated persons*	moving persons*
2.0 m	4.5 m x 4.5 m	6.0 m x 6.0 m ± 0.5 m
2.5 m	6.0 m x 6.0 m	8.0 m x 8.0 m ± 0.5 m
3.0 m	7.0 m x 7.0 m	9.0 m x 9.0 m ± 0.5 m
3.5 m	8.0 m x 8.0 m	10.0 m x 10.0 m ± 1.0 m

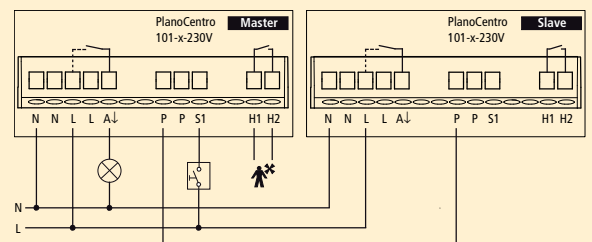
\* The tolerance of the length/width of the detection area is ± 1 m

## Connection diagrams

### Single unit operation



### Master/slave parallel switching





# Management remote controls **SendoPro 868-A, SendoClic**

## Remote control



**SendoPro 868-A**  
Management remote control

### ■ SendoPro 868-A

#### Management remote control

- Infra-red remote control for the convenient start-up of HTS presence sensors
- Compatible with PlanoCentro, compact, presence light and ECO-IR C NT
- The SendoPro 868A service and management remote control for the electrician enables efficient start-up and flexible adaptation to new applications.
- Rapid adjustment of parameters to changed operating conditions without uninstalling detectors
- Transmission of individual settings or complete configuration sets to the detector
- Calling up of pre-defined value packets for typical rooms
- Saving and calling up user-defined parameter sets on internal memory or SD card
- Updates via SD card
- Intuitive menu navigation with full graphic display

#### Function

- Setting of all parameter with the single press of a button
- Frequently used settings can be saved, retrieved as required at any time, and transmitted to the presence detector.
- The parameters can be stored according to object in the internal memory or saved on an SD card.
- Typical parameters are pre-defined for different rooms (office, corridor, WC, etc...) in the SendoPro 868-A.
- User-defined settings can be stored in the SendoPro 868-A.
- Functions such as test/reset can be activated

#### Technical data:

**Power supply:** Type AA batteries, 4 x 1.5 V  
**Transmission medium:** Infra-red, radio 868 MHz  
**Range:** approx. 4 m, approx. 8 m (ECO-IR C NT)  
**Emission angle:** ± 15°  
**Dimensions:** 190 x 82 x 25 mm  
**Temperature range:** +0 °C... +50 °C  
**Colour:** black



**SendoClic**  
User remote control

### ■ SendoClic

#### user remote control

- Infra-red remote control for Theben HTS presence detectors
- Switching and dimming of lighting, scene control
- 2 channels for 2 lighting groups
- 2 programmable scenes
- 5 group addresses for defining channels
- Coding switch and programming key for the easy allocation of lighting groups and channels

#### ■ Function:

- The clic user remote control features 2 channels for controlling 2 lighting groups.
- clic enables the switching and dimming of up to 2 lighting groups.
- Light settings can be called up and saved
- Settings in the presence detector cannot be changed with clic.

#### Technical data:

**Power supply:** 2 x 1.5 V batteries, LR03/AAA type  
**Transmission medium:** Infra-red  
**Range:** approx. 10 m  
**Emission angle:** ± 15°  
**Dimensions:** 120 x 57 x 24 mm  
**Temperature range:** 0 °C... +50 °C  
**Colour:** grey

Type		Order no.
SendoPro 868-A	management remote control	9070675
Accessories SD card	memory card	9070676
SendoClic	user remote control	9070690



Compact passimo presence detector  
for ceiling installation

# Brings lights and safety to warehouse corridors

compact passimo

Perfect automatic light control and  
presence monitoring  
e.g. in warehouses

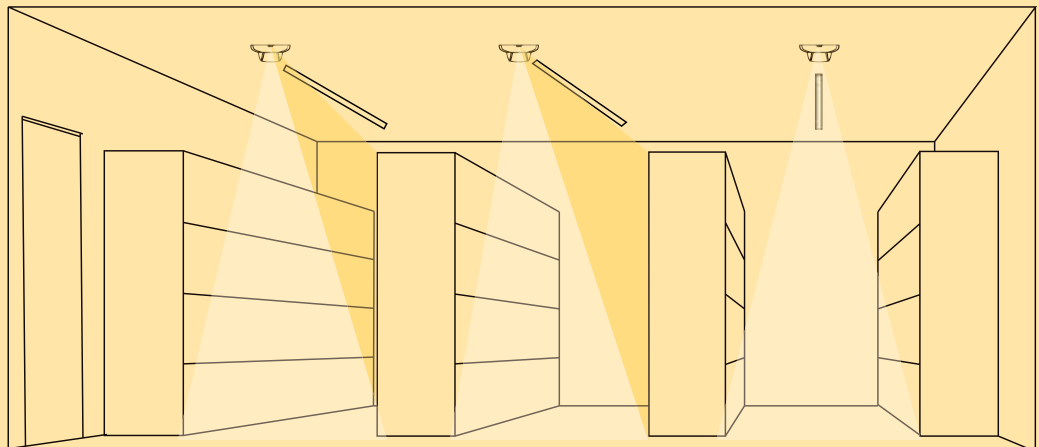
Easy remote control and  
configuration options



Ultra-sensitive multi-  
sensor measurement

Exact limitation of  
detection area at the  
entrance to the corridor

e.g. warehouses  
Only on entering the  
individual corridor  
does the lighting  
come on



# Compact passimo presence detector for ceiling mounting



compact passimo

**New**

## compact passimo

- Passive infra-red presence detector for ceiling installation
- rectangular 180° detection area for warehouse aisles
- Clear demarcation of detection area directly below presence detector
- automatic control of lighting and HVAC as well as room monitoring function
- Mixed light measurement
- Light switch output (relay, 230 V)
- Lighting control with light threshold value and self-learning run-on time that adjusts to the occupant's behaviour
- Choice of fully or semi-automatic operation
- Sensor or switch options for manual switching
- Pulse function for staircase light timer
- Presence switch output (relay, floating)
- HVAC control with switch-on delay and run-on time
- Room monitoring with selective movement detection
- QuickSet plus service remote control (optional)
- Parameters can be selected for subsequent changes
- Clic user remote control (optional)

## Accessories

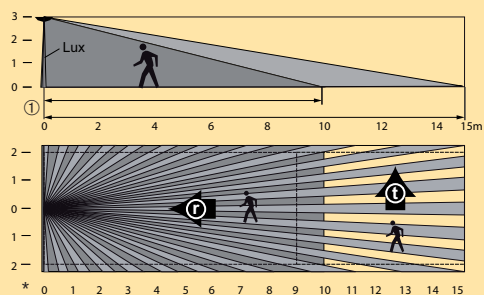
- The configuration can be set either via the potentiometer or via the optional service remote control QuickSet plus (order no. 907 0 532).
- The clic user remote control (order no. 907 0 515) allows the individual switching a maximum of two lighting groups.
- A suitable surface-mounted frame (order no. 907 514) is available for surface-mounted installation.

## Common function

- The switching behaviour of the presence detector is controlled by presence and light.
- Fully or semi-automatic: In "Fully automatic" mode, the lighting switches on and off automatically according to presence and light. In "Semi-automatic" mode, switching on must be completed manually and switching off happens automatically.
- Manual override: The lighting can be manually switched on or off at any time via sensors or switches.
- The presence detector has a mixed light measurement and is suitable for switching the following types of lamp: fluorescent lamps (FL/PL), halogen and incandescent lamps.
- Switch contact for HVAC control: The switching behaviour of the floating contact is only controlled by presence.
- The switch-on delay prevents instantaneous switch on. The contact only closes on completion of the switch-on delay.
- The sensitivity of the presence switch output is reduced in the "monitoring" position. The contact indicates the presence of people with a high degree of certainty.
- Master/slave parallel switching: Up to 10 detectors can be connected with each other to extend the detection area. The master switches the load. All other detectors merely provide presence information as slaves.
- Master/master parallel switching: Up to 10 detectors can be connected with each other to control several lighting groups. Each master controls its lighting group according to its own brightness measurements. Presence is detected by all the detectors.
- Device can be connected as master or slave.
- Test operation mode checks the detection range and installation.

Min. height	radial movement*	tangential movement*
2.0 m	8 m x 3.5 m = 28 m <sup>2</sup>	15 m x 3.5 m = 53 m <sup>2</sup>
2.5 m	9 m x 4.0 m = 36 m <sup>2</sup>	15 m x 4.0 m = 60 m <sup>2</sup>
3.0 m	10 m x 4.5 m = 45 m <sup>2</sup>	15 m x 4.5 m = 68 m <sup>2</sup>
3.5 m	10 m x 5.0 m = 50 m <sup>2</sup>	15 m x 5.0 m = 75 m <sup>2</sup>

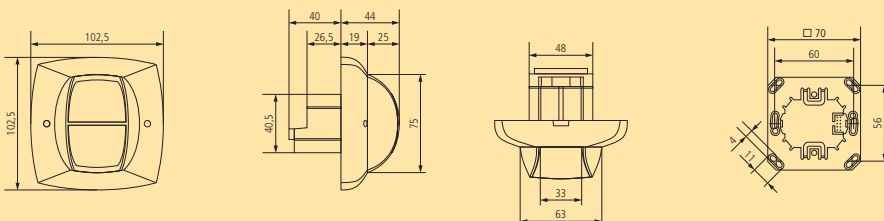
## Detection range (installation height 3.0 m)



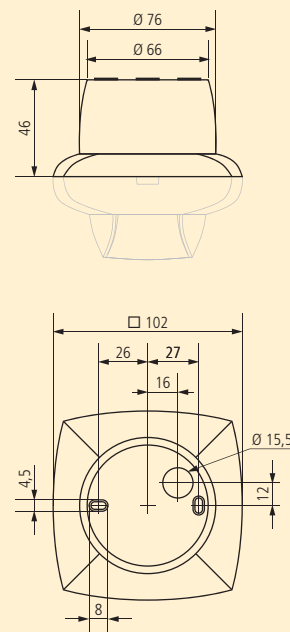
### Tolerances:

- ① The tolerance of the detection limit below the presence detector is  $\pm 0.5$  m, depending on installation height and accuracy of installation.
- \* The tolerance of the length/width of the detection area is  $\pm 1$  m

## Dimension diagrams: compact passimo



## Dimension diagrams: compact passimo installed on surface-mounted compact frame (accessory)

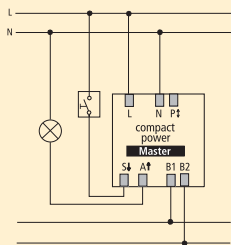




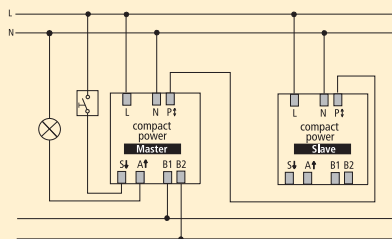
Technical data:	compact passimo
Operating voltage	230 V~ ±10 %
Frequency	50 Hz
Light measurement	Mixed light
Brightness setting range	10 – 1500 lux
Power consumption	1 W
Channels	Light/Presence
Light contact type	Relay, floating
Max. switching current	6 A
Crossover switching	yes
Incandescent lamp load	1200 W
Halogen lamp load (230 V)	1200 W
Compact fluorescent lamps (T5) – EVG	10 x (1 x 58 W), 5 x (2 x 58 W), 16 x (1 x 36 W), 8 x (2 x 36 W), 16 x (≤ 36 W)
Contact Presence (monitoring)	Relay, floating
Switching capacity	50 W/220 V DC 50 VA / 250 V AC, minimum 0.5 mV 10 mA
Parallel switching	yes
Detection area	180° rectangular
moving (installation height, 2.5 m)	60 m <sup>2</sup> (4 x 15 m ± 1 m)
moving (installation height, 3.5 m)	75 m <sup>2</sup> (5 x 15 m ± 1m)
recommended installation height	2.0 – 3.5 m
Light channel run-on time	10 sec – 20 min, short pulse (0.5 s)
Presence channel switch-on delay (HVAC)	0 sec – 10 min
Presence channel run-on time	10 sec – 120 min
Protection rating in accordance with EN 60529	IP 40
Operating temperature range	0 °C to 50 °C
<b>compact passimo</b>	
white	<b>2010080</b>
black	<b>2010809</b>
silver	<b>2030810</b>
<b>Accessories:</b>	
Surface (mount) frame compact, white	9070514
Service remote control QuickSet plus	9070532
clic user remote control	9070515

### Connection diagrams

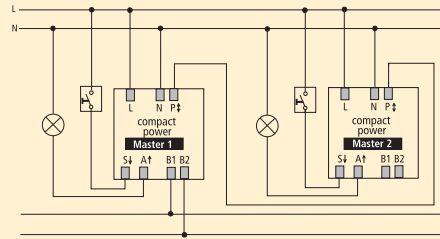
#### Single unit operation



#### Master/slave parallel switching



#### Master/master parallel switching





**theben<sup>®</sup>**

Theben AG  
Hohenbergstraße 32, 72401 Haigerloch, GERMANY  
Postfach 56, 72394 Haigerloch, GERMANY  
Phone +49 (0)74 74/6 92-0  
Fax +49 (0)74 74/6 92-150  
Email: [info@theben.de](mailto:info@theben.de), [www.theben.de](http://www.theben.de)