

**ECO-IR 360A**

**Article number: 2020000**

**Description**



- Presence detector (PIR)
- Square detection area

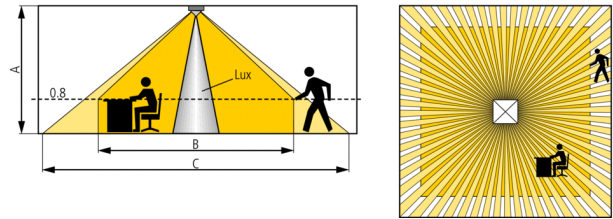
- Genuine daylight measurement
- Light switch output (relay, 230 V)
- Presence switch output (relay, potential-free)
- Automatic control of lighting and HVAC
- Lighting control with light threshold value and self-learning switch-off delay
- HVAC control with separate switch-off delay
- The presence detector has "Genuine daylight measurement" and is only suitable for switching fluorescent lamps (FL/PL)
- Presence switch contact for HVAC control: The switching behaviour of the potential-free contact is only controlled by presence
- The parameters are set via the potentiometer
  - The switching behaviour of the presence detector is controlled by presence and light
  - The self-learning switch-off delay adjusts to occupants' behaviour
- The square detection area allows accurate and simple planning

**Technical data**

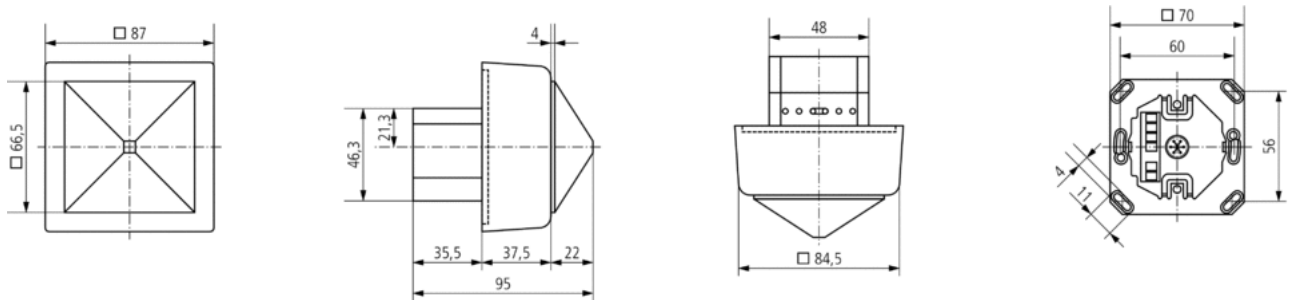
Operating voltage	230 V AC
Frequency	50 Hz
Recommended installation height	2 – 3,5 m
Installation type	Ceiling installation
Stand-by consumption	0,9 W
Light measurement	Genuine daylight measurement
Setting range brightness	50 – 1600 lx
Light switch-off delay	2 min-15 min
Type of contact light	Relay 230 V
Lamps	Fluorescent lamps
Compact and fluorescent lamps	max. 1400 VA
Compact and fluorescent lamps (Number of electronic ballasts)	12 x (1 x 58 W), 6 x (2 x 58 W), 18 x (1 x 36 W), 9 x (2 x 36 W), 18 x (smaller than 36 W)
Presence switch-off delay	10-60 min
Type of contact presence	Relay potential-free
Switching capacity presence	100 W (24 V DC), 460 VA (230 V AC), $\mu$
Switching output	Potential-free
Type of connection	Spring terminals
Max. cable cross section	1,5 mm <sup>2</sup>
Mounting plate	70 x 70 mm
Size of concealed housing	Ø 55 mm (NIS, PMI)
Ambient temperature	+0 °C ... +50 °C
Protection class	II as per EN 60 730-1
Type of protection	IP 40

**Detection area**

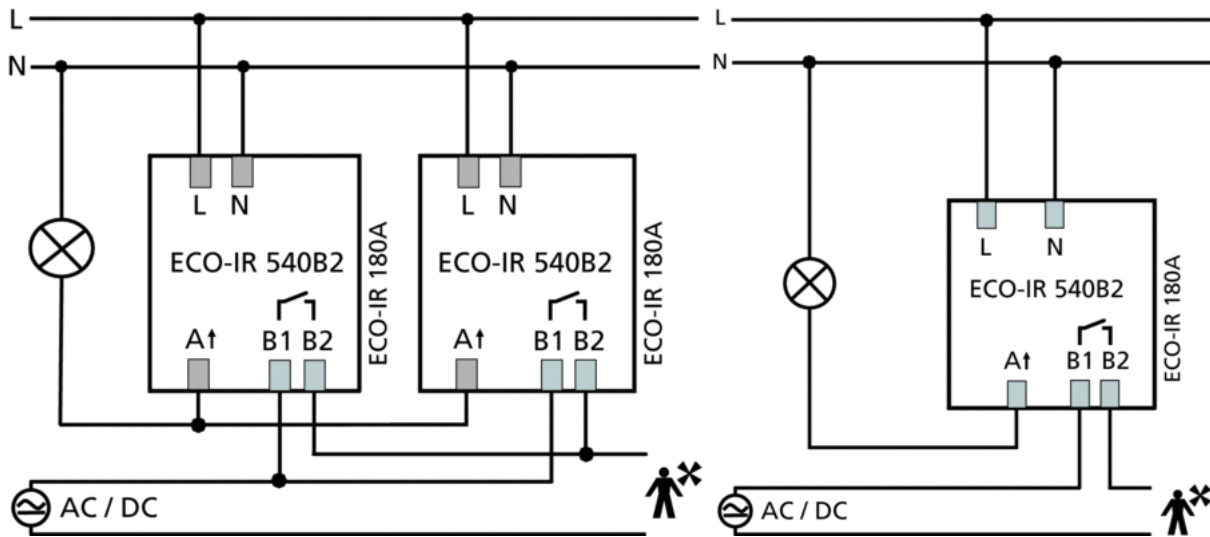
Mounting height (A)	Sitting (B)	Moving (C)
2 m	4,5 m x 4,5 m	6 m x 6 m ±0,5 m
2,5 m	6 m x 6 m	8 m x 8 m ±0,5 m
3 m	7 m x 7 m	9 m x 9 m ±0,5 m
3,5 m	8 m x 8 m	10 m x 10 m ±1 m
4 m	□	11 m x 11 m ±1 m



**Scale drawings**



**Connection example**

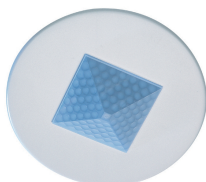


## Accessories

---

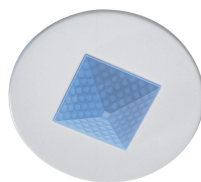
### QuickFix round cover

- Article number: 9070517  
[Details ▶ www.theben.de](http://www.theben.de)



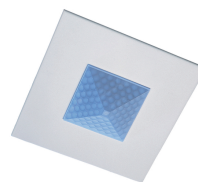
### QuickFix concrete round cover

- Article number: 9070519  
[Details ▶ www.theben.de](http://www.theben.de)



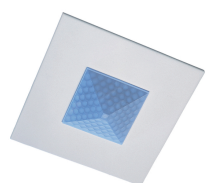
### QuickFix concrete square cover

- Article number: 9070518  
[Details ▶ www.theben.de](http://www.theben.de)



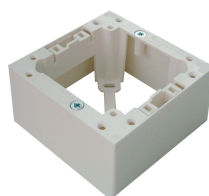
### QuickFix square cover

- Article number: 9070516  
[Details ▶ www.theben.de](http://www.theben.de)



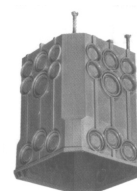
### Surface frame ECO-IR 360

- Article number: 9070512  
[Details ▶ www.theben.de](http://www.theben.de)



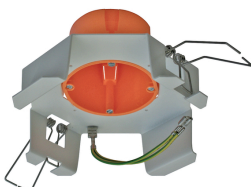
### QuickFix concrete flush-mounted box

- Article number: 9070521  
[Details ▶ www.theben.de](http://www.theben.de)



### QuickFix flush-mounted housing

- Article number: 9070522  
[Details ▶ www.theben.de](http://www.theben.de)



### QuickSafe

- Article number: 9070531  
[Details ▶ www.theben.de](http://www.theben.de)

