

PresenceLight 180

Article number: 2000050

Description



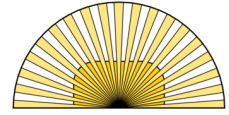
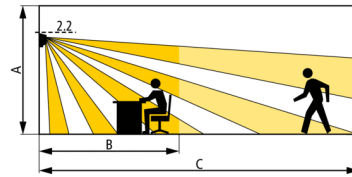
- Presence detector (PIR)
- Detection area 180°
- Wall installation
- Mixed light measurement
- Light switch output (relay, 230 V)
- Automatic lighting control
- Lighting control with light threshold value and self-learning switch-off delay
- Pulse function for staircase time switch
- Can be configured remotely
 - The switching behaviour of the presence detector is controlled by presence and light
- The self-learning switch-off delay adjusts to occupants' behaviour
- The pulse function is for controlling a staircase time switch
- The presence detector has a mixed light measurement and is suitable for switching the following types of lamp: Fluorescent lamps (FL/PL), halogen and incandescent lamps as well as LEDs
- Test operation mode checks the detection area and installation
- The parameters can either be set using the potentiometer or via the optional service remote control QuickSet plus

Technical data

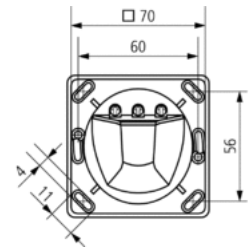
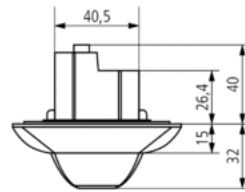
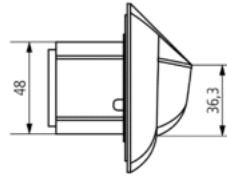
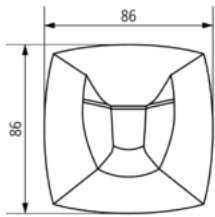
Operating voltage	230 V AC
Frequency	50 Hz
Recommended installation height	1,6 – 2,2 m
Installation type	Wall installation
Stand-by consumption	0,9 W
Light measurement	Mixed light measurement
Setting range brightness	10 – 1500 lx
Light switch-off delay	Impuls (0,5 s), 10 s-20 min
Type of contact light	Relay 230 V
Lamps	Incandescent/halogen lamps, Fluorescent lamps, Energy saving lamps, LEDs
Resistive load	1400 W
Incandescent/halogen lamp load	1200 W
Compact and fluorescent lamps	960 VA (cos f = 0,8), 580 VA (cos f = 0,5)
Compact and fluorescent lamps (Number of electronic ballasts)	10 x (1 x 58 W), 5 x (2 x 58 W), 16 x (1 x 36 W), 8 x (2 x 36 W), 16 x (smaller than 36 W)
Type of connection	Screw terminals
Max. cable cross section	2 x 2,5 mm ²
Mounting plate	70 x 70 mm
Size of concealed housing	Ø 55 mm (NIS, PMI)
Ambient temperature	-20 °C ... +50 °C
Type of protection	IP 54

Detection area

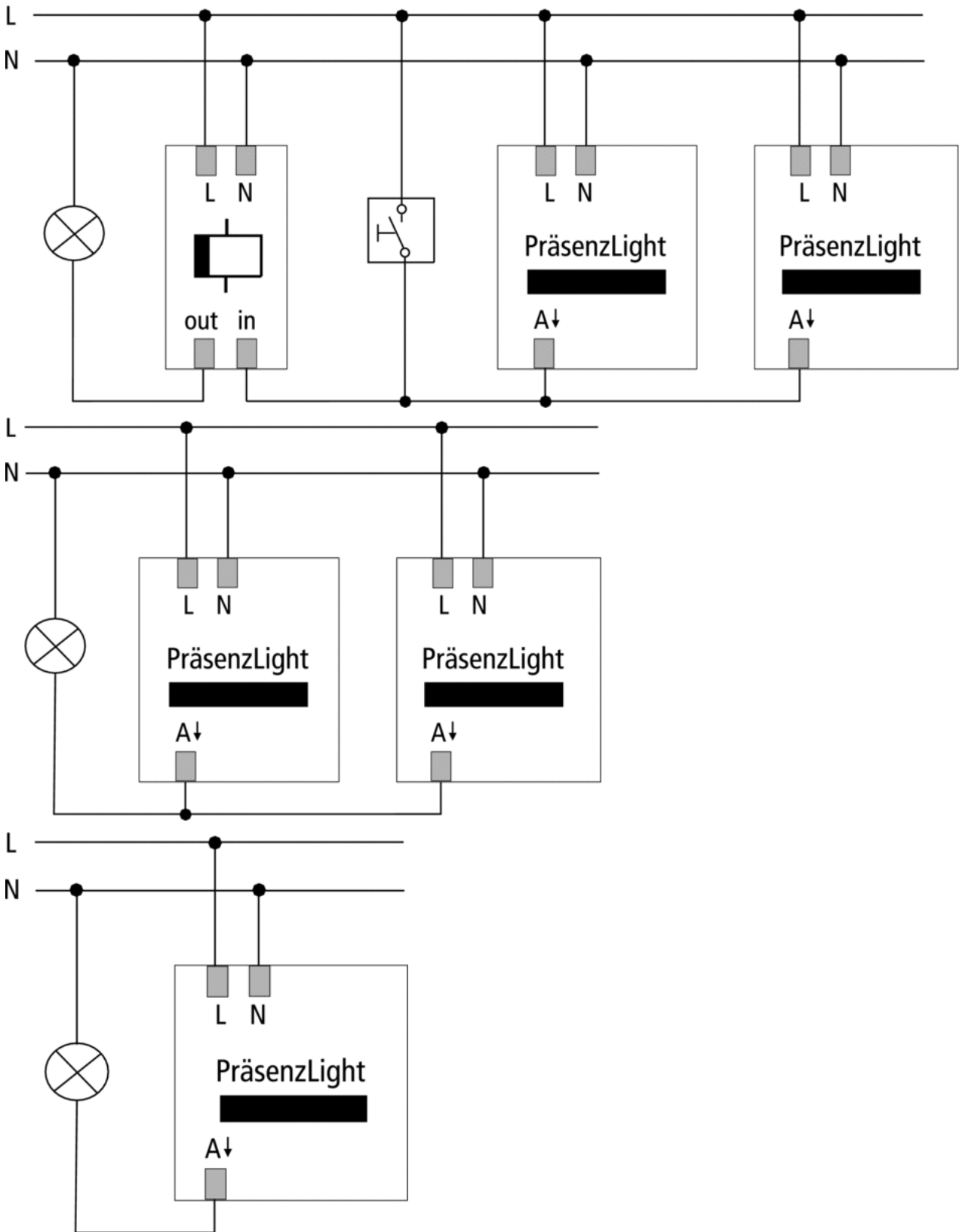
Mounting height (A)	Sitting (B)	Moving (C)
2,2 m	7 m x 3,5 m	8 m



Scale drawings



Connection example



Accessories

Surface frame PresenceLight

- Article number: 9070513
[Details ▶ www.theben.de](http://www.theben.de)



QuickSafe

- Article number: 9070531
[Details ▶ www.theben.de](http://www.theben.de)



clic

- Article number: 9070515
[Details ▶ www.theben.de](http://www.theben.de)



QuickSet plus

- Article number: 9070532
[Details ▶ www.theben.de](http://www.theben.de)

