

Programming

OBELISK top2 programming kit



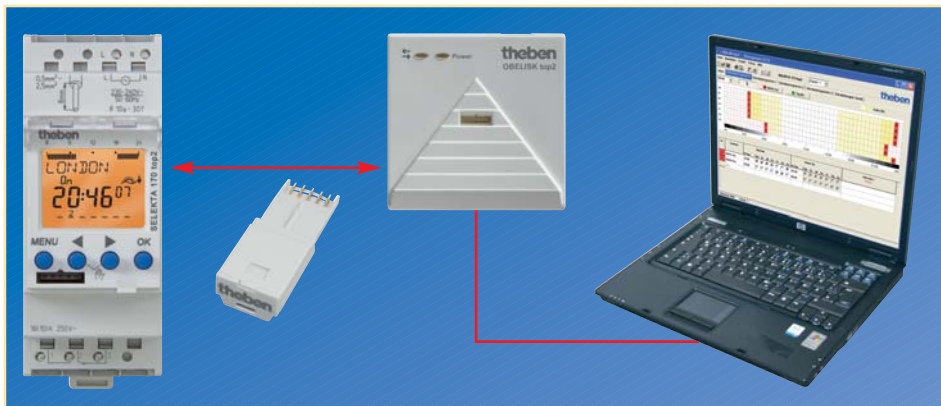
OBELISK top2 programming kit

- Consisting of:
 - memory card
 - USB plug adapter
 - software (for Windows 2000/XP/Vista)
 - OBELISK top2 software for:
 - TERMINA top2: – TERMINA 610 top2
 - TERMINA 611 top2
 - TERMINA 611 top2 RC
 - TERMINA 612 top2
 - TERMINA 622 top2
 - LUNA top2: – LUNA 111 top2
 - LUNA 112 top2
 - LUNA 120 top2
 - LUNA 121 top2 RC
 - LUNA 122 top2 RC
 - SELEKTA top2: – SELEKTA 170 top2
 - SELEKTA 171 top2 RC
 - SELEKTA 172 top2
- updates of current OBELISK top2 software are available as free downloads at www.theben.de.

Technical data:

- Operating voltage:** USB
- USB cable length:** 1.8 m
- Storage space required on the hard drive:** 25 MB
- Plug adapter dimensions:** 74 x 74 x 30 mm

Program transfer from PC to device and vice versa



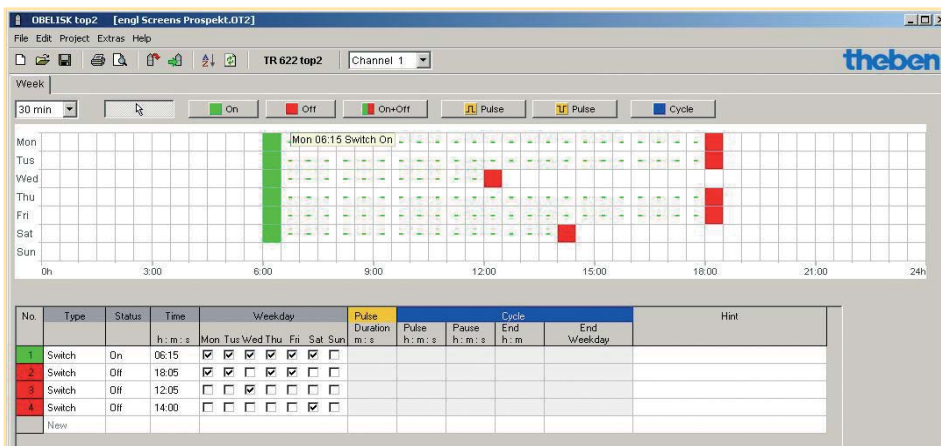
A program produced on a PC with the easy to use OBELISK top2 software, can be transferred to the OBELISK top2 memory card via the USB interface and from there to the clock and vice versa. This means there is no need for a PC or laptop on site.

Copying from device to device



If a program is produced directly on a device, can easily be transferred from one device to another via the OBELISK top2 memory card.

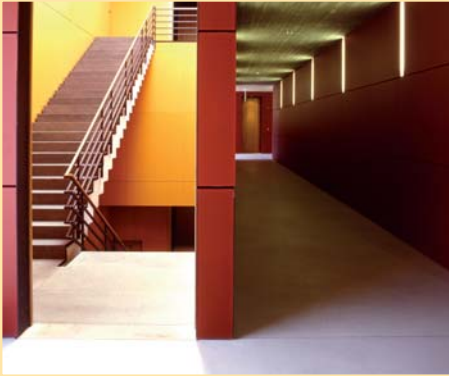
PC software



Clear and easy to understand: Switching programs can be easily be entered on your own computer using the additional OBELISK top2 PC software. Even complicated programs can be created by a few clicks of the mouse button in next to no time.

Switch-on phases are clearly shown in diagram form and automatically listed in a table. This allows programs for individual customers to be saved, printed off or exported in Excel format.

Corridor and playground lighting



Corridor and playground lighting should be switched off on holidays and weekends to save costs. Holidays and bank holidays can easily be selected via a special program.

Lighting on bank holidays and weekends



Lighting is on longer on bank holidays and weekends. This just requires a simple one-off entry as the update of movable holidays for the following years follows automatically.

Lighting control and pump control



Switching on underwater lights from sunset to 22.00 via channel 1. The pump is switched on at 07.00 and switched off at 22.00 on channel 2.

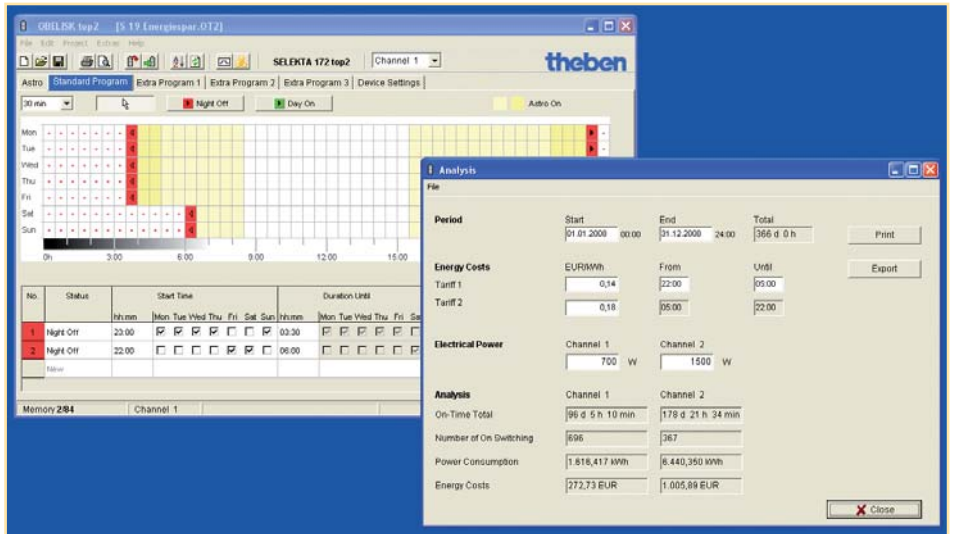
SELEKTA timers with straight forward location entry and city selection

Integrated database with approx. 1000 international and national towns and cities



Entering latitudes and longitudes is possible but not essential. Entering a city also automatically brings up the relevant latitudes and longitudes as well as the selection of the appropriate time zone.

Programming software with energy saving calculation



With SELEKTA top2 devices, selecting the program allows the energy costs to be calculated for a chosen timescale, e. g. per financial year. Savings through night time switch-off, bank holiday and special programs can easily be shown and printed off.

The program calculates the exact power-on time for each day of the year. Entering the kWh price (peak/off-peak tariff), as well as light source consumption in W, enables the exact calculation of lighting costs.