



RAMSES 701



RAMSES 706



RAMSES 707

**Function:**

Room temperature control with thermal feedback, suitable for all types of heating, e.g. gas, water, electric heating with central/single room control.

- Setting control for +5 °C to +30 °C, including mechanical limiting device
- RAM 708/709 also suitable for air conditioning devices

**RAMSES 701 RAMSES®**

**RAMSES 702 RAMSES®**

- Integrated temp. lowering (about 4 K) through external activation (e.g. timer SYN 161 h, TR 610 top) possible

**RAMSES 703 RAMSES® as RAM 702, but internal setting**

- Temperature cannot be set externally. The temperature is set internally when the device is switched on

**RAMSES 704 RAMSES®**

- Switch for additional heating ON/OFF+ control lamp

**RAMSES 705 RAMSES®**

- Switch for heating ON/OFF

**RAMSES 706 RAMSES®**

- Integrated temperature lowering (about 4 K) through external activation (e.g. time switch) possible
- Switch for heating ON/OFF + control lamp

**RAMSES 707 RAMSES®**

- Switch for heating ON/OFF
- Switch for heating ON/OFF + control lamp

**RAMSES 708 RAMSES®**

- Changeover contact for heating or cooling

**RAMSES 709 RAMSES®**

- Changeover contact for heating or cooling
- 3-position selector switch for: comfort mode, lowering mode, external lowering (time-controlled via time switch)
- Control lamp

**Technical data:**

**Operating voltage:**

230–240 V~, +10 %/–15 %

**Frequency:** 50–60 Hz

**NC contact:**

10 (4) A, 230 V~

max. 10 THEBEN actuators can be activated (see page 114)

**Change-over contact:**

10 (4) A (heating),

max. 10 THEBEN actuators can be activated (see page 114),

5 (2) A (cooling)

**Temperature range:** +5 °C... +30 °C

**Switching difference, dynamic:**

about 1 K, thermal feedback

**Protection class:** II according to EN 60730-1 subject to correct installation

**Type of protection:** IP 30 according to EN 60529

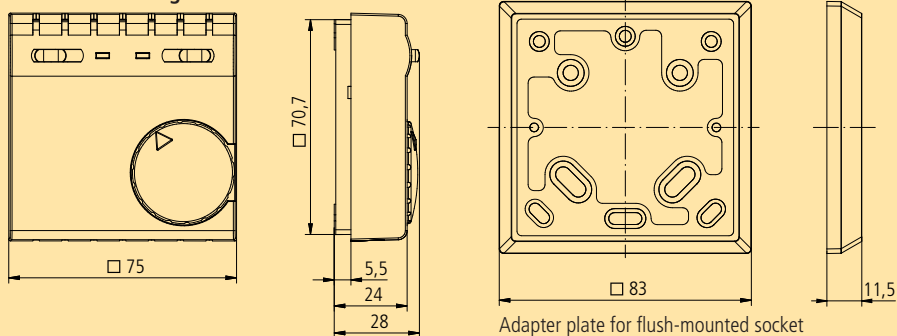
**Color of housing:** pure white (RAL 9010)

**Test approvals:**

**Weight:** approx. 80 g

For the connecting diagrams, see page 121.

Dimension drawings

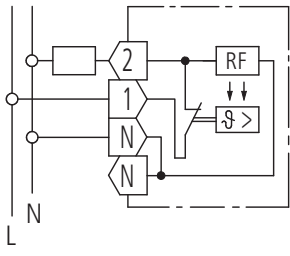


Adapter plate for flush-mounted socket

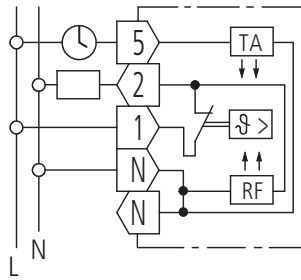
Type	Nominal voltage	Temperature range	Switching difference dynamic about	Connection	Switching contacts	Rated current at 230 V~	Order No.
RAMSES 701	230 V/50–60 Hz	+5 °C to +30 °C	1 K	2-/3-wire	1 NC contact	10 (4) A	701 0 001
RAMSES 702	230 V/50–60 Hz	+5 °C to +30 °C	1 K	3-/4-wire	1 NC contact	10 (4) A	702 0 001
RAMSES 703	230 V/50–60 Hz	+5 °C to +30 °C	1 K	3-/4-wire	1 NC contact	10 (4) A	703 0 001
RAMSES 704	230 V/50–60 Hz	+5 °C to +30 °C	1 K	3-/4-wire	1 NC contact	10 (4) A	704 0 001
RAMSES 705	230 V/50–60 Hz	+5 °C to +30 °C	1 K	3-/4-wire	1 NC contact	10 (4) A	705 0 001
RAMSES 706	230 V/50–60 Hz	+5 °C to +30 °C	1 K	4-/5-wire	1 NC contact	10 (4) A	706 0 001
RAMSES 707	230 V/50–60 Hz	+5 °C to +30 °C	1 K	4-/5-wire	1 NC contact	10 (4) A	707 0 001
RAMSES 708	230 V/50–60 Hz	+5 °C to +30 °C	1 K	3-/4-wire	1 change-over switch	10 (4) A/5 (2) A	708 0 001
RAMSES 709	230 V/50–60 Hz	+5 °C to +30 °C	1 K	4-/5-wire	1 change-over switch	10 (4) A/5 (2) A	709 0 001
Adapter plate for flush-mounted socket 79 x 79 mm							907 0 480

# Wall mounting

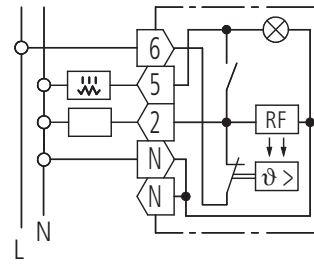
## Wiring diagrams



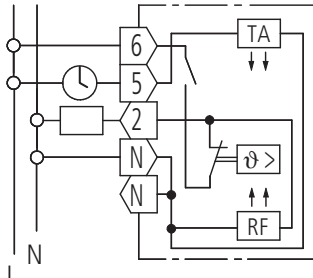
RAM 701



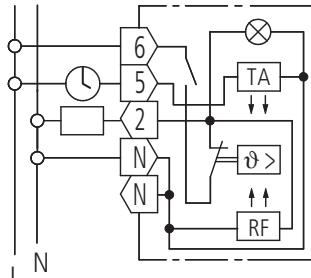
RAM 702/703



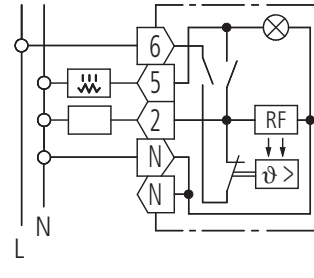
RAM 704



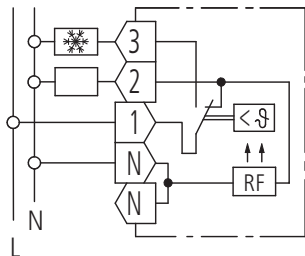
RAM 705



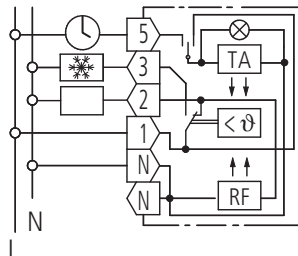
RAM 706



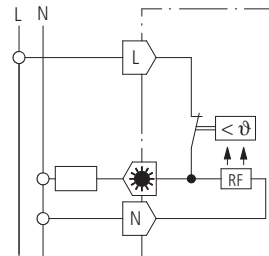
RAM 707



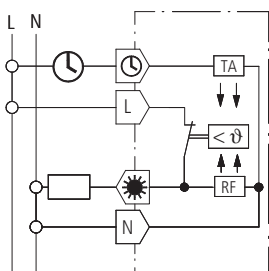
RAM 708



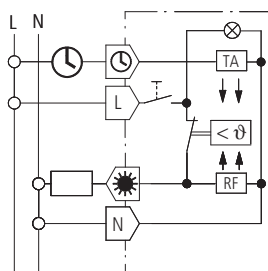
RAM 709



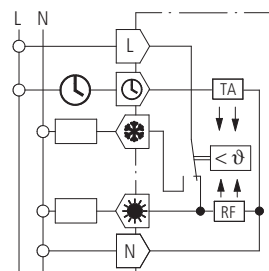
RAM 741



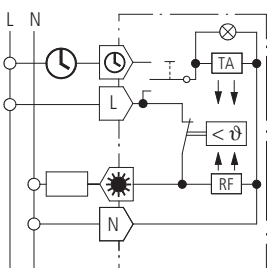
RAM 742



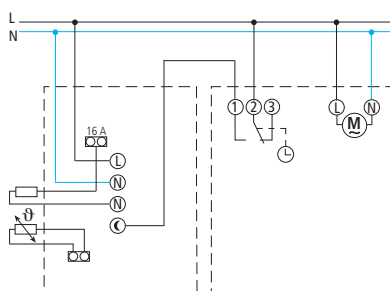
RAM 746



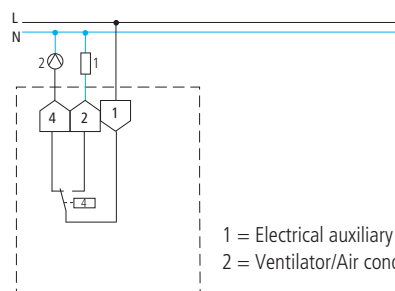
RAM 748



RAM 749



RAM 714/714 A



SOT 715

1 = Electrical auxiliary heating  
2 = Ventilator/Air conditioner

⌚ Time switch/Switch for lowering temperature  
❄️ Air conditioning/Fan

☐ Heating/Actuator/Solenoid valve/Burner/Circulating pump/Blower of night storage heating systems  
⚡ Electric additional heating